

Product datasheet for **TA327671**

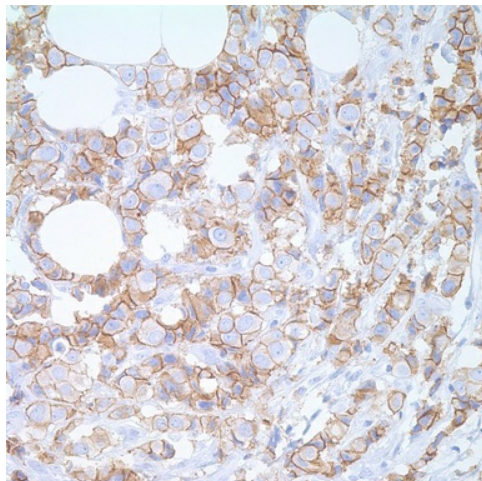
E Cadherin (CDH1) Rabbit Monoclonal Antibody [Clone ID: EP700Y]

Product data:

Product Type:	Primary Antibodies
Clone Name:	EP700Y
Applications:	IHC
Recommended Dilution:	IHC: 1:50 - 1:200
Reactivity:	Human
Host:	Rabbit
Isotype:	IgG
Clonality:	Monoclonal
Formulation:	This antibody is supplied as cell culture supernatant diluted in tris buffered saline, pH 7.3-7.7, with 1% BSA and <0.1% sodium azide.
Conjugation:	Unconjugated
Storage:	Store at -20°C as received.
Stability:	Stable for 12 months from date of receipt.
Gene Name:	cadherin 1
Database Link:	NP_004351 Entrez Gene 999 Human P12830
Synonyms:	Arc-1; CD324; CDHE; ECAD; LCAM; UVO
Note:	E-cadherin is an adhesion protein that is expressed in cells of epithelial lineage. Anti-E-cadherin stains positively in glandular epithelium as well as adenocarcinomas of the lung, G.I. tract, and ovary. Another application involves the differentiation of ductal (which stains positive) vs. lobular cancer of the breast. It has also been shown to be positive in some thyroid carcinomas. Loss of E-cadherin expression has been suggested as a poor prognostic sign in breast carcinoma and non-small cell lung carcinoma.
Protein Families:	Druggable Genome, ES Cell Differentiation/IPS, Transmembrane
Protein Pathways:	Adherens junction, Bladder cancer, Cell adhesion molecules (CAMs), Endometrial cancer, Melanoma, Pathogenic Escherichia coli infection, Pathways in cancer, Thyroid cancer



[View online »](#)

Product images:

Immunohistochemistry staining of Paraffin Breast tissue by e-cadherin antibody (dilution: 1:50 - 1:200; visualization of staining: Membranous)