

Product datasheet for **TA327670**

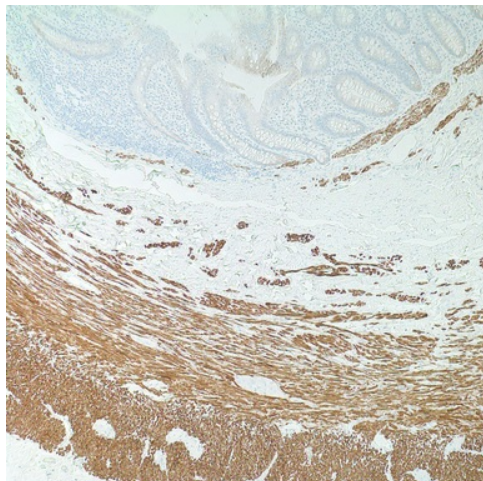
Desmin (DES) Mouse Monoclonal Antibody [Clone ID: D33]

Product data:

Product Type:	Primary Antibodies
Clone Name:	D33
Applications:	IHC
Recommended Dilution:	IHC: 1:25 - 1:100
Reactivity:	Human
Host:	Mouse
Isotype:	IgG1, kappa
Clonality:	Monoclonal
Formulation:	This antibody is supplied as cell culture supernatant diluted in tris buffered saline, pH 7.3-7.7, with 1% BSA and <0.1% sodium azide.
Conjugation:	Unconjugated
Storage:	Store at -20°C as received.
Stability:	Stable for 12 months from date of receipt.
Gene Name:	desmin
Database Link:	NP_001918 Entrez Gene 1674 Human P17661
Synonyms:	CSM1; CSM2; LGMD2R
Note:	Anti-desmin detects a protein that is expressed by cells of normal smooth, skeletal, and cardiac muscles. The light microscope has suggested that desmin is primarily located at or near the periphery of Z lines in striated muscle fibrils. In smooth muscle, desmin interconnects cytoplasmic dense bodies with membrane-bound dense plaques. Anti-desmin reacts with leiomyomas, leiomyosarcoma, rhabdomyomas, rhabdomyosarcoma, and perivascular cells of glomus tumors of the skin (if they are of myogenic nature). This antibody is used to demonstrate the myogenic components/derivation of tumors.
Protein Families:	Druggable Genome
Protein Pathways:	Arrhythmogenic right ventricular cardiomyopathy (ARVC), Dilated cardiomyopathy, Hypertrophic cardiomyopathy (HCM)



[View online »](#)

Product images:

Immunohistochemistry staining of Paraffin Muscle tissue by Desmin antibody (dilution: 1:25 - 1:100; visualization of staining: Cytoplasmic)