

## Product datasheet for **TA327668**

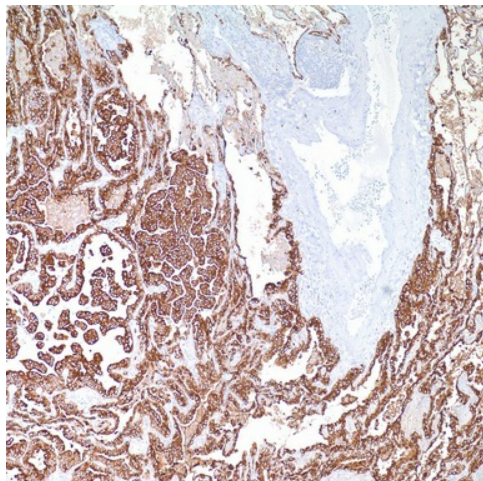
### Cytokeratin 7 (KRT7) Mouse Monoclonal Antibody [Clone ID: OV-TL 12/30]

#### Product data:

Product Type:	Primary Antibodies
Clone Name:	OV-TL 12/30
Applications:	IHC
Recommended Dilution:	IHC: 1:100 - 1:500
Reactivity:	Human
Host:	Mouse
Isotype:	IgG1, kappa
Clonality:	Monoclonal
Formulation:	This antibody is supplied as cell culture supernatant diluted in tris buffered saline, pH 7.3-7.7, with 1% BSA and <0.1% sodium azide.
Conjugation:	Unconjugated
Storage:	Store at -20°C as received.
Stability:	Stable for 12 months from date of receipt.
Gene Name:	keratin 7
Database Link:	<a href="#">NP_005547</a> <a href="#">Entrez Gene 3855 Human P08729</a>
Synonyms:	CK7; K2C7; K7; SCL
Note:	Anti-cytokeratin 7 reacts with proteins that are found in most ductal, glandular, and transitional epithelia of the urinary tract and bile duct epithelial cells. Anti-cytokeratin 7 distinguishes between lung and breast epithelium that stain positive, and colon and prostate epithelial cells that are negative. This antibody also reacts with many benign and malignant epithelial lesions, e.g. adenocarcinomas of the ovary, breast, and lung. Transitional cell carcinomas are positive and prostate cancer is negative. This antibody does not recognize intermediate filament proteins.
Protein Families:	ES Cell Differentiation/IPS



[View online »](#)

**Product images:**

Immunohistochemistry staining of Paraffin Lung adenocarcinoma tissue by Cytokeratin 7 antibody (dilution: 1:100 - 1:500; visualization of staining: Cytoplasmic)