

Product datasheet for **TA327667**

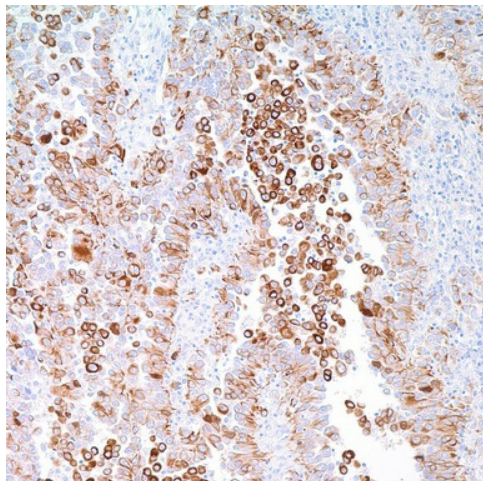
Cytokeratin 5 (KRT5) Mouse Monoclonal Antibody [Clone ID: D5/16B4]

Product data:

Product Type:	Primary Antibodies
Clone Name:	D5/16B4
Applications:	IHC
Recommended Dilution:	IHC: 1:50 - 1:200
Reactivity:	Human
Host:	Mouse
Isotype:	IgG1
Clonality:	Monoclonal
Formulation:	This antibody is supplied as cell culture supernatant diluted in tris buffered saline, pH 7.3-7.7, with 1% BSA and <0.1% sodium azide.
Conjugation:	Unconjugated
Storage:	Store at -20°C as received.
Stability:	Stable for 12 months from date of receipt.
Gene Name:	keratin 5
Database Link:	NP_000415 Entrez Gene 3852 Human P13647
Synonyms:	CK5; DDD; DDD1; EBS2; K5; KRT5A
Note:	Anti-CK 5 & 6 positivity is seen in nearly 100% of malignant mesotheliomas and in nearly 0% of lung adenocarcinomas. Anti-CK 5 & 6 positivity can be seen in undifferentiated large cell carcinoma as well as squamous carcinoma, and has been useful in recognizing spindle cell squamous cell carcinoma of the skin. Less than 10% of carcinomas of the breast, colon, and prostate stain positively for this marker. Anti-CK 5 & 6 has also been used successfully as a myoepithelial cell marker in the prostate and breast to determine malignancy. Anti-CK 5 & 6 is a useful marker to distinguish lung squamous cell carcinoma from lung adenocarcinoma and large cell carcinoma within a panel including antibodies against TTF-1, Napsin A, p63, SOX2, desmocollin3, and desmoglein3.



[View online »](#)

Product images:

Immunohistochemistry staining of Paraffin Mesothelioma tissue by Cytokeratin 5&6 antibody (dilution: 1:50 - 1:200; visualization of staining: Cytoplasmic)