

Product datasheet for **TA327665**

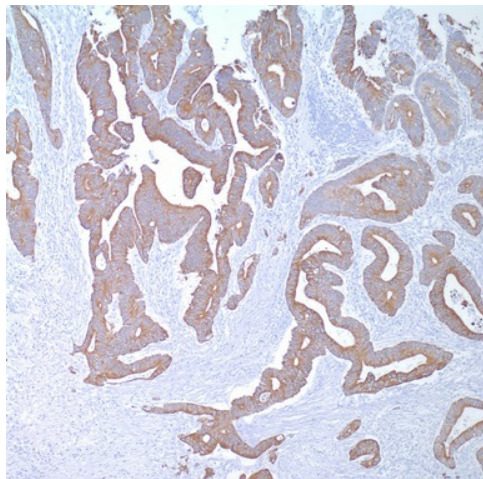
Cytokeratin 20 (KRT20) Mouse Monoclonal Antibody [Clone ID: Ks20.8]

Product data:

Product Type:	Primary Antibodies
Clone Name:	Ks20.8
Applications:	IHC
Recommended Dilution:	IHC: 1:200 - 1:500
Reactivity:	Human
Host:	Mouse
Isotype:	IgG2a, kappa
Clonality:	Monoclonal
Formulation:	This antibody is supplied as cell culture supernatant diluted in tris buffered saline, pH 7.3-7.7, with 1% BSA and <0.1% sodium azide.
Conjugation:	Unconjugated
Storage:	Store at -20°C as received.
Stability:	Stable for 12 months from date of receipt.
Gene Name:	keratin 20
Database Link:	NP_061883 Entrez Gene 54474 Human P35900
Synonyms:	CD20; CK-20; CK20; K20; KRT21
Note:	This antibody reacts primarily with gastric and intestinal epithelium, urothelium, and Merkel cells. Anti-cytokeratin 20 is useful in the differentiation of specific types of simple epithelial cells of the urinary tract as well as normal and malignantly transformed epithelia. Studies have identified the presence of cytokeratin 20 in adenocarcinomas of the colon, stomach, pancreas, and biliary system. Additionally, mucinous ovarian tumors, transitional cell, and Merkel cell carcinomas have shown reactivity. In contrast, squamous cell carcinomas and adenocarcinomas of the breast, lung, and endometrium, non-mucinous tumors of the ovary, and small cell carcinomas are non-reactive.



[View online »](#)

Product images:

Immunohistochemistry staining of Paraffin Colon carcinoma tissue by Cytokeratin 20 antibody (dilution: 1:200 - 1:500; visualization of staining: Cytoplasmic)