

Product datasheet for **TA327660**

Chromogranin A (CHGA) Mouse Monoclonal Antibody [Clone ID: LK2H10]

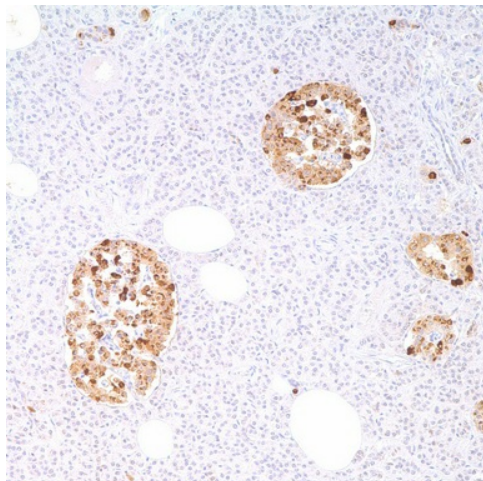
Product data:

Product Type:	Primary Antibodies
Clone Name:	LK2H10
Applications:	IHC
Recommended Dilution:	IHC: 1:100 - 1:500
Reactivity:	Human
Host:	Mouse
Isotype:	IgG1, kappa
Clonality:	Monoclonal
Formulation:	This antibody is supplied as cell culture supernatant diluted in tris buffered saline, pH 7.3-7.7, with 1% BSA and <0.1% sodium azide.
Conjugation:	Unconjugated
Storage:	Store at -20°C as received.
Stability:	Stable for 12 months from date of receipt.
Gene Name:	chromogranin A
Database Link:	NP_001266 Entrez Gene 1113 Human P10645
Synonyms:	CGA
Note:	Immunohistochemical methods have localized chromogranin in a wide variety of endocrine tissues such as the pituitary, pancreas, hypothalamus, and parathyroid. Neuroendocrine cells exhibit a fine granular immunoreactivity to anti-chromogranin. It is generally accepted that the co-expression of certain keratins and chromogranin mean neuroendocrine lineage. The presence of strong anti-chromogranin staining and absence of anti-keratin staining should raise the possibility of paraganglioma. The co-expression of chromogranin and NSE is typical of neuroendocrine neoplasms. Most pituitary adenomas and prolactinomas readily express chromogranin.
Protein Families:	Druggable Genome, Secreted Protein



[View online »](#)

Product images:



Immunohistochemistry staining of Paraffin Pancreas tissue by Chromogranin A antibody (dilution: 1:100 - 1:500; visualization of staining: Cytoplasmic)