

Product datasheet for **TA327658**

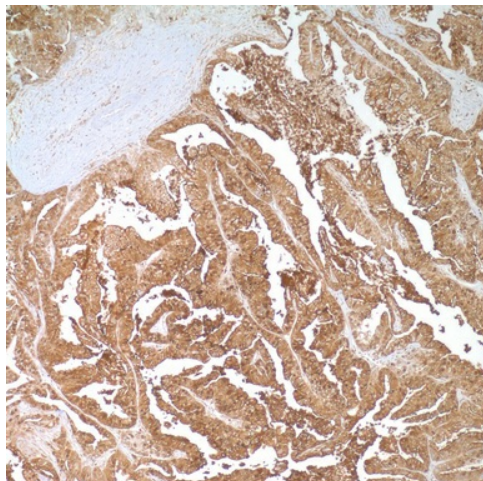
CEACAM5 Mouse Monoclonal Antibody [Clone ID: CEA31]

Product data:

Product Type:	Primary Antibodies
Clone Name:	CEA31
Applications:	IHC
Recommended Dilution:	IHC: 1:100 - 1:500
Reactivity:	Human
Host:	Mouse
Isotype:	IgG1
Clonality:	Monoclonal
Formulation:	This antibody is supplied as cell culture supernatant diluted in tris buffered saline, pH 7.3-7.7, with 1% BSA and <0.1% sodium azide.
Conjugation:	Unconjugated
Storage:	Store at -20°C as received.
Stability:	Stable for 12 months from date of receipt.
Gene Name:	carcinoembryonic antigen related cell adhesion molecule 5
Database Link:	NP_004354 Entrez Gene 1048 Human P06731
Synonyms:	CD66e; CEA
Note:	Anti-CEA is employed essentially as a tool to assist in the distinction between adenocarcinoma and epithelioid malignant mesotheliomas, along with other markers such as those against calretinin, CK 5&6, CD15, HBME-1, MOC-31, and Ber-EP4. Another suggested use of anti-CEA is to immunophenotype various metastatic adenocarcinomas as a means of identifying their origin within a panel of different markers. Anti-CEA positivity is seen in adenocarcinomas from the lung, colon, stomach, esophagus, pancreas, gallbladder, urachus, salivary gland, ovary, and endocervix. Polyclonal anti-CEA is useful in staining hepatocellular carcinoma in a canalicular pattern.



[View online »](#)

Product images:

Immunohistochemistry staining of Paraffin Colon tissue by CEA antibody (dilution: 1:100 - 1:500; visualization of staining: Cytoplasmic)