

Product datasheet for **TA327657**

CDX2 Rabbit Monoclonal Antibody [Clone ID: EPR2764Y]

Product data:

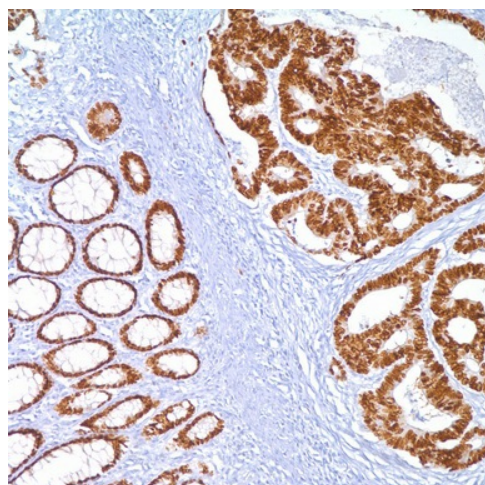
Product Type:	Primary Antibodies
Clone Name:	EPR2764Y
Applications:	IHC
Recommended Dilution:	IHC: 1:100 - 1:500
Reactivity:	Human
Host:	Rabbit
Isotype:	IgG
Clonality:	Monoclonal
Formulation:	This antibody is supplied as cell culture supernatant diluted in tris buffered saline, pH 7.3-7.7, with 1% BSA and <0.1% sodium azide.
Conjugation:	Unconjugated
Storage:	Store at -20°C as received.
Stability:	Stable for 12 months from date of receipt.
Gene Name:	caudal type homeobox 2
Database Link:	NP_001256 Entrez Gene 1045 Human Q99626
Synonyms:	AS; CDX-3; CDX2; CDX3
Note:	CDX-2 is a caudal-related homeobox transcription factor whose expression in the adult is normally restricted to the intestinal epithelium. It is implicated in the development and maintenance of the intestinal mucosa. This protein is expressed immunohistochemically in the nuclei of normal intestinal epithelium. CDX-2 protein expression has been seen in gastrointestinal (GI) carcinomas, more so in lower GI than in upper GI. Anti-CDX-2 has been useful to establish gastrointestinal origin of metastatic adenocarcinomas and carcinoids and is especially useful to distinguish metastatic colorectal adenocarcinoma from lung adenocarcinoma. However, mucinous carcinomas of the ovary also stain positively with this antibody, which limits the usefulness of this marker in the distinction of metastatic colorectal adenocarcinoma versus mucinous carcinoma of the ovary.



[View online »](#)

Protein Families: Adult stem cells, Druggable Genome, Embryonic stem cells, ES Cell Differentiation/IPS, Transcription Factors

Product images:



Immunohistochemistry staining of Paraffin Colon tissue by CDX2 antibody (dilution: 1:100 - 1:500; visualization of staining: Nuclear)