

## Product datasheet for **TA327651**

### CD7 Mouse Monoclonal Antibody [Clone ID: MRQ-56]

#### Product data:

Product Type:	Primary Antibodies
Clone Name:	MRQ-56
Applications:	IHC
Recommended Dilution:	IHC: 1:100 - 1:500
Reactivity:	Human
Host:	Mouse
Isotype:	IgG1
Clonality:	Monoclonal
Formulation:	This antibody is supplied as cell culture supernatant diluted in tris buffered saline, pH 7.3-7.7, with 1% BSA and <0.1% sodium azide.
Conjugation:	Unconjugated
Storage:	Store at -20°C as received.
Stability:	Stable for 12 months from date of receipt.
Gene Name:	CD7 molecule
Database Link:	<a href="#">NP_006128</a> <a href="#">Entrez Gene 924 Human P09564</a>
Synonyms:	GP40; LEU-9; Tp40; TP41



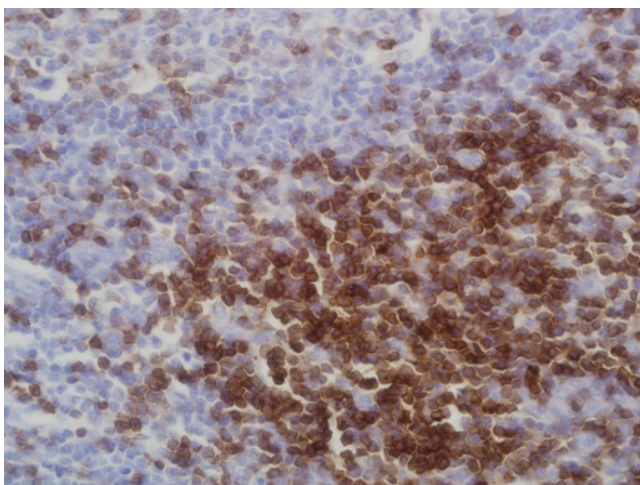
[View online »](#)

**Note:** CD7 antigen is a cell surface glycoprotein of 40 kDa expressed on the surface of immature and mature T-cells as well as natural killer (NK) cells. It is a member of the immunoglobulin gene superfamily and is the first T-cell lineage associated antigen to appear in T-cell ontogeny, being expressed in T-cell precursors (preceding CD2 expression), and in myeloid precursors, in fetal liver and bone marrow, and persisting in circulating mature T-cells. While its precise function is not known, it is suggested that the molecule functions as an Fc receptor for IgM. CD7 is the most consistently expressed T-cell antigen in lymphoblastic lymphomas/leukemias, and therefore anti-CD7 is a useful marker in the identification of such neoplastic proliferations. In mature post-thymic T-cell neoplasms, CD7 is the most common pan-T-antigen to be aberrantly expressed, which is a useful pointer to a neoplastic T-cell process. CD7 has been shown to be immunoprecipitated in 85% of mature peripheral T-cells, the majority of post-thymic T-cells, NK cells, T-cell lymphoblastic leukemia/lymphoma, acute myeloid leukemia, and chronic myelogenous leukemia. CD7 is conspicuously absent in adult T-cell leukemia/lymphoma and is not expressed in mycosis fungoides.

**Protein Families:** Druggable Genome, Transmembrane

**Protein Pathways:** Hematopoietic cell lineage

### Product images:



Immunohistochemistry staining of Paraffin Tonsil, Lymph node, Peripheral T-cell Lymphoma tissue by CD7 antibody (dilution: 1:100 - 1:500; visualization of staining: Membranous)