

Product datasheet for **TA327650**

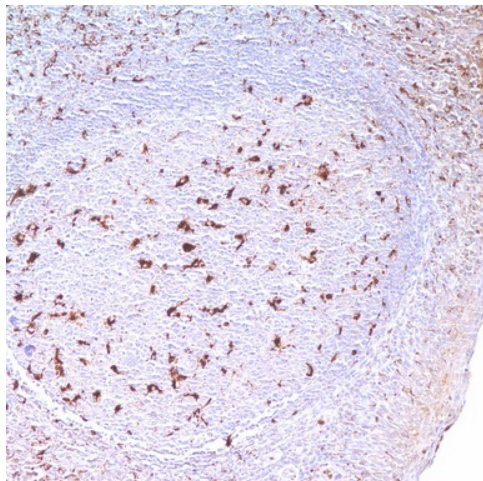
CD68 Mouse Monoclonal Antibody [Clone ID: Kp-1]

Product data:

Product Type:	Primary Antibodies
Clone Name:	Kp-1
Applications:	IHC
Recommended Dilution:	IHC: 1:100 - 1:500
Reactivity:	Human
Host:	Mouse
Isotype:	IgG1, kappa
Clonality:	Monoclonal
Formulation:	This antibody is supplied as cell culture supernatant diluted in tris buffered saline, pH 7.3-7.7, with 1% BSA and <0.1% sodium azide.
Conjugation:	Unconjugated
Storage:	Store at -20°C as received.
Stability:	Stable for 12 months from date of receipt.
Gene Name:	CD68 molecule
Database Link:	NP_001242 Entrez Gene 968 Human P34810
Synonyms:	GP110; LAMP4; SCARD1
Note:	Anti-CD68 marks cells of monocyte/macrophage lineage. This antibody is capable of staining monocytes, Kupffer cells, osteoclasts, granulocytes and their precursors; lymphomas are negative or show few granules. This antibody may be useful for the identification of myelomonocytic and histiocytic tumors. Since this detects a formalin-resistant epitope that may be associated with lysosomal granules, other lysosome-rich cells may also stain.
Protein Families:	Druggable Genome, Transmembrane
Protein Pathways:	Lysosome



[View online »](#)

Product images:

Immunohistochemistry staining of Paraffin Tonsil tissue by CD68 antibody (dilution: 1:100 - 1:500; visualization of staining: Cytoplasmic)