

Product datasheet for **TA327640**

CD44 Mouse Monoclonal Antibody [Clone ID: MRQ-13]

Product data:

Product Type:	Primary Antibodies
Clone Name:	MRQ-13
Applications:	IHC
Recommended Dilution:	IHC: 1:100 - 1:500
Reactivity:	Human
Host:	Mouse
Isotype:	IgG2a
Clonality:	Monoclonal
Formulation:	This antibody is supplied as cell culture supernatant diluted in tris buffered saline, pH 7.3-7.7, with 1% BSA and <0.1% sodium azide.
Conjugation:	Unconjugated
Storage:	Store at -20°C as received.
Stability:	Stable for 12 months from date of receipt.
Gene Name:	CD44 molecule (Indian blood group)
Database Link:	NP_000601 Entrez Gene 960 Human P16070
Synonyms:	CDW44; CSPG8; ECMR-III; HCELL; HUTCH-I; IN; LHR; MC56; MDU2; MDU3; MIC4; Pgp1
Note:	The CD44 family of glycoproteins exists in a number of variant isoforms, the most common being the standard 85-95 kD or hematopoietic variant (CD44s) that is found in mesodermal cells such as hematopoietic, fibroblastic, and glial cells, as well as in some carcinoma cell lines. Higher molecular weight isoforms have been described in epithelial cells (CD44v) and are thought to function in intercellular adhesion and stromal binding. While many human tumors express CD44, a positive correlation between increased CD44v expression and tumor progression and/or dedifferentiation has been demonstrated in only some. Probably the most practical application of anti-CD44 immunostaining at present is the discrimination of urothelial transitional cell carcinoma in-situ from non-neoplastic changes in the urothelium.

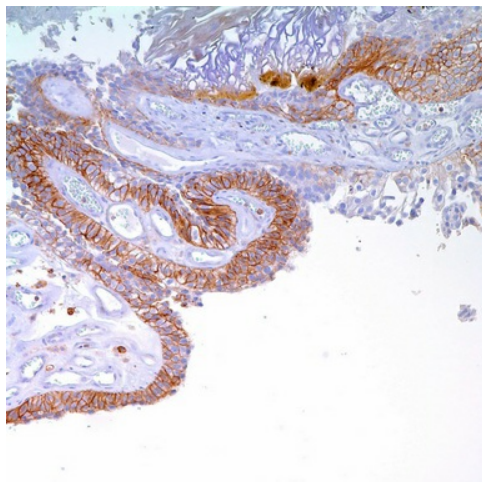


[View online »](#)

Protein Families: Adult stem cells, Cancer stem cells, Druggable Genome, Embryonic stem cells, ES Cell Differentiation/IPS, Stem cell relevant signaling - DSL/Notch pathway, Transmembrane

Protein Pathways: ECM-receptor interaction, Hematopoietic cell lineage

Product images:



Immunohistochemistry staining of Paraffin Benign urothelium tissue by CD44 antibody (dilution: 1:100 - 1:500; visualization of staining: Membranous)