

Product datasheet for **TA327635**

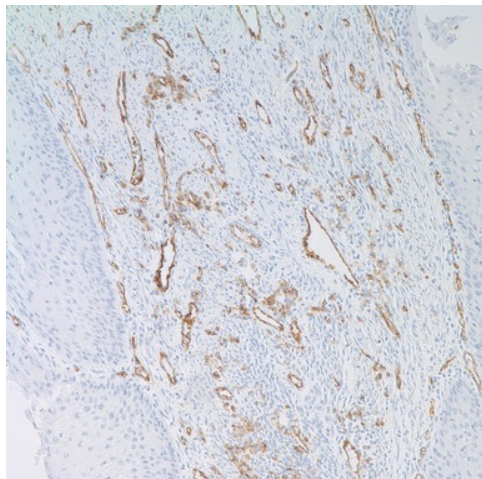
CD31 (PECAM1) Mouse Monoclonal Antibody [Clone ID: JC70]

Product data:

Product Type:	Primary Antibodies
Clone Name:	JC70
Applications:	IHC
Recommended Dilution:	IHC: 1:25 - 1:100
Reactivity:	Human
Host:	Mouse
Isotype:	IgG1, kappa
Clonality:	Monoclonal
Formulation:	This antibody is supplied as cell culture supernatant diluted in tris buffered saline, pH 7.3-7.7, with 1% BSA and <0.1% sodium azide.
Conjugation:	Unconjugated
Storage:	Store at -20°C as received.
Stability:	Stable for 12 months from date of receipt.
Gene Name:	platelet and endothelial cell adhesion molecule 1
Database Link:	NP_000433 Entrez Gene 5175 Human P16284
Synonyms:	CD31; EndoCAM; endoCAM; GPIIA; PECA1; PECAM-1
Note:	CD31 is expressed by stem cells of the hematopoietic system and is primarily used to identify and concentrate these cells for experimental studies as well as for bone marrow transplantation. Endothelial cells also express this marker, therefore, antibodies to CD31 have been used as a tool to identify the vascular origin of neoplasms. Anti-CD31 has shown to be highly specific and sensitive for vascular endothelial cells. Staining of nonvascular tumors (excluding hematopoietic neoplasms) has not been observed with this antibody.
Protein Families:	Druggable Genome, ES Cell Differentiation/IPS, Transmembrane
Protein Pathways:	Cell adhesion molecules (CAMs), Leukocyte transendothelial migration



[View online »](#)

Product images:

Immunohistochemistry staining of Paraffin Tonsil tissue by CD31 antibody (dilution: 1:25 - 1:100; visualization of staining: Cytoplasmic, membranous)