

Product datasheet for **TA327634**

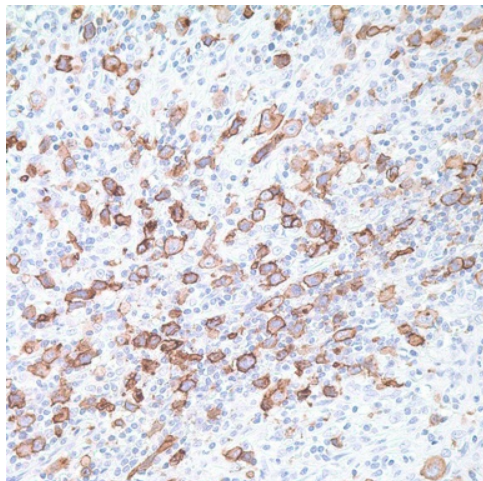
CD30 (TNFRSF8) Mouse Monoclonal Antibody [Clone ID: Ber-H2]

Product data:

Product Type:	Primary Antibodies
Clone Name:	Ber-H2
Applications:	IHC
Recommended Dilution:	IHC: 1:50 - 1:200
Reactivity:	Human
Host:	Mouse
Isotype:	IgG1, kappa
Clonality:	Monoclonal
Formulation:	This antibody is supplied as cell culture supernatant diluted in tris buffered saline, pH 7.3-7.7, with 1% BSA and <0.1% sodium azide.
Conjugation:	Unconjugated
Storage:	Store at -20°C as received.
Stability:	Stable for 12 months from date of receipt.
Gene Name:	tumor necrosis factor receptor superfamily member 8
Database Link:	NP_001234 Entrez Gene 943 Human P28908
Synonyms:	CD30; D1S166E; Ki-1
Note:	Anti-CD30 detects a formalin-resistant epitope that is expressed by Reed-Sternberg cells in classic Hodgkin lymphoma, the majority of anaplastic large cell lymphomas, primary cutaneous CD30 positive T-cell lymphoproliferative disorders, and in embryonal carcinomas. Occasionally diffuse large B-cell lymphoma stains with this antibody. This antibody also stains plasma cells in paraffin-embedded tissue. However, reactive immunoblasts are immunoreactive with this antibody. The staining pattern of anti-CD30 in lymphoma or embryonal carcinoma is different, with the former being membranous and exhibiting Golgi zone accentuation in location, and the latter being membranous only.
Protein Families:	Druggable Genome, ES Cell Differentiation/IPS, Stem cell - Pluripotency, Transmembrane
Protein Pathways:	Cytokine-cytokine receptor interaction



[View online »](#)

Product images:

Immunohistochemistry staining of Paraffin Classic Hodgkin lymphoma tissue by CD30 antibody (dilution: 1:50 - 1:200; visualization of staining: Membranous)