

Product datasheet for **TA327633**

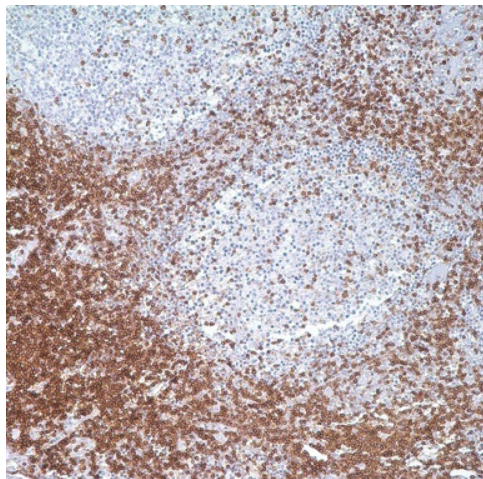
CD3D Rabbit Monoclonal Antibody [Clone ID: MRQ-39]

Product data:

Product Type:	Primary Antibodies
Clone Name:	MRQ-39
Applications:	IHC
Recommended Dilution:	IHC: 1:100 - 1:500
Reactivity:	Human
Host:	Rabbit
Isotype:	IgG1
Clonality:	Monoclonal
Formulation:	This antibody is supplied as cell culture supernatant diluted in tris buffered saline, pH 7.3-7.7, with 1% BSA and <0.1% sodium azide.
Conjugation:	Unconjugated
Storage:	Store at -20°C as received.
Stability:	Stable for 12 months from date of receipt.
Gene Name:	CD3d molecule
Database Link:	NP_000723 Entrez Gene 915 Human P04234
Synonyms:	CD3-DELTA; IMD19; T3D
Note:	Anti-CD3 is considered to be a pan-T-cell marker. Anti-CD3 reacts with an antigen present at the surface and in the cytoplasm of the T lymphocytes. The antibody for immunohistochemical detection locates the cytoplasmic component of CD3 protein. Anti-CD3 is widely used in detection of T-cell malignancies, both immature and mature.
Protein Families:	Druggable Genome
Protein Pathways:	Hematopoietic cell lineage, Primary immunodeficiency, T cell receptor signaling pathway



[View online »](#)

Product images:

Immunohistochemistry staining of Paraffin Tonsil tissue by CD3 antibody (dilution: 1:100 - 1:500; visualization of staining: Membranous)