

## Product datasheet for **TA327632**

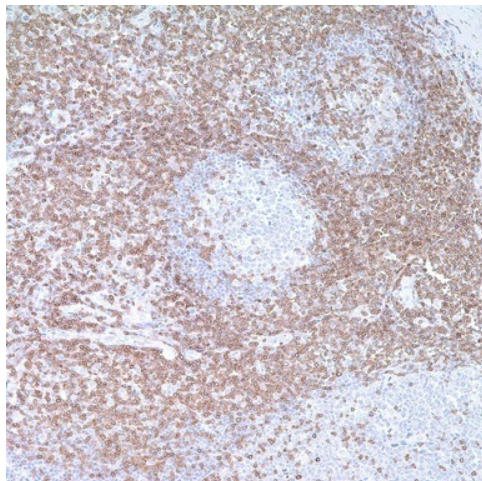
### CD3D Rabbit Polyclonal Antibody

#### Product data:

|                       |   |
|-----------------------|---|
| Product Type:         | Primary Antibodies  |
| Applications:         | IHC   |
| Recommended Dilution: | IHC: 1:100 - 1:1000   |
| Reactivity:           | Human   |
| Host:                 | Rabbit  |
| Clonality:            | Polyclonal  |
| Formulation:          | This antibody is supplied as cell culture supernatant diluted in tris buffered saline, pH 7.3-7.7, with 1% BSA and <0.1% sodium azide.  |
| Conjugation:          | Unconjugated  |
| Storage:              | Store at -20°C as received.   |
| Stability:            | Stable for 12 months from date of receipt.  |
| Gene Name:            | CD3d molecule   |
| Database Link:        | <a href="#">NP_000723</a><br><a href="#">Entrez Gene 915 Human</a><br><a href="#">P04234</a>  |
| Synonyms:             | CD3-DELTA; IMD19; T3D   |
| Note:                 | Anti-CD3 is considered to be a pan-T-cell marker. Anti-CD3 reacts with an antigen present at the surface and in the cytoplasm of the T lymphocytes. The antibody for immunohistochemical detection locates the cytoplasmic component of CD3 protein. Anti-CD3 is widely used in detection of T-cell malignancies, both immature and mature. |
| Protein Families:     | Druggable Genome  |
| Protein Pathways:     | Hematopoietic cell lineage, Primary immunodeficiency, T cell receptor signaling pathway   |



[View online »](#)

**Product images:**

Immunohistochemistry staining of Paraffin Tonsil tissue by CD3 antibody (dilution: 1:100 - 1:1000; visualization of staining: Membranous)