

Product datasheet for **TA327630**

CD23 (FCER2) Mouse Monoclonal Antibody [Clone ID: MRQ-57]

Product data:

Product Type:	Primary Antibodies
Clone Name:	MRQ-57
Applications:	IHC
Recommended Dilution:	IHC: 1:100 - 1:500
Reactivity:	Human
Host:	Mouse
Isotype:	IgG2a
Clonality:	Monoclonal
Formulation:	This antibody is supplied as cell culture supernatant diluted in tris buffered saline, pH 7.3-7.7, with 1% BSA and <0.1% sodium azide.
Conjugation:	Unconjugated
Storage:	Store at -20°C as received.
Stability:	Stable for 12 months from date of receipt.
Gene Name:	Fc fragment of IgE receptor II
Database Link:	NP_001993 Entrez Gene 2208 Human P06734
Synonyms:	BLAST-2; CD23; CD23A; CLEC4J; FCE2; IGEBF



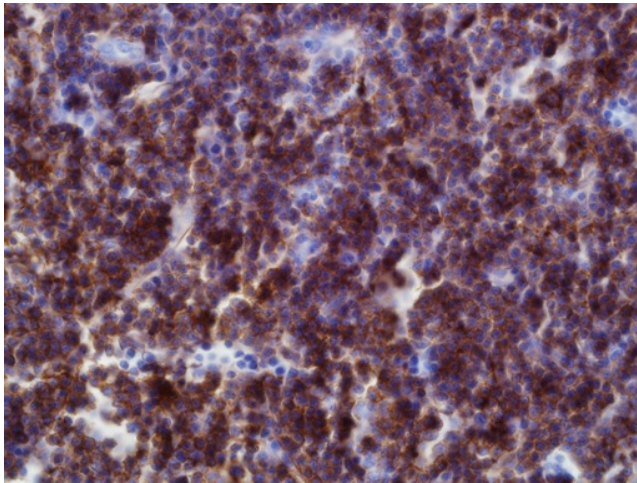
[View online »](#)

Note: CD23 antigen is a 45-60 kDa membrane glycoprotein identified as a low affinity receptor for IgE production as well as a receptor for lymphocyte growth factor. CD23 is found in some mature B-cell lymphomas and in Reed-Sternberg cells in Hodgkin disease. Follicular dendritic cells and some activated B-cells within germinal centers express CD23 in high density and mantle zone B-cells are stained weakly. The majority of chronic lymphocytic leukemias/small lymphocytic lymphomas are CD23 positive, whereas mantle cell lymphomas are generally negative, so this marker is useful when applied with other markers to separate the small cell lymphomas. Precursor B and T lymphomas, myeloid neoplasms, and mature T-cell lymphomas are CD23 negative and other small cell lymphomas are occasionally positive. CD23 is also positive on activated mature B-cells expressing IgM or IgD, monocytes/macrophages, follicular dendritic cells, T-cell subsets, eosinophils, Langerhans cells and B-cell Chronic lymphocytic leukemia/Small lymphocytic lymphoma (CLL/SLL).

Protein Families: Secreted Protein, Transmembrane

Protein Pathways: Hematopoietic cell lineage

Product images:



Immunohistochemistry staining of Paraffin Tonsil, lymph node, chronic lymphocytic leukemia, small lymphocytic lymphoma tissue by CD23 antibody (dilution: 1:100 - 1:500; visualization of staining: Membranous)