

Product datasheet for **TA327629**

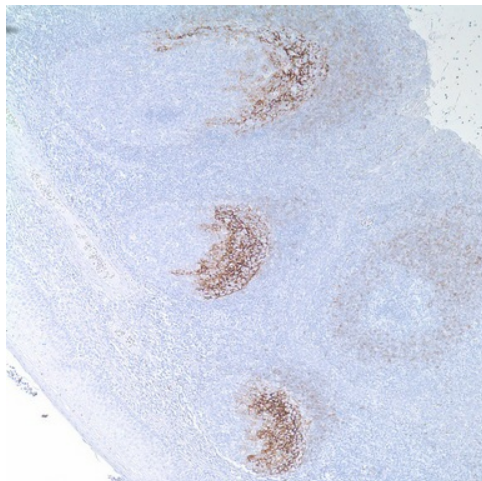
CD23 (FCER2) Mouse Monoclonal Antibody [Clone ID: 1B12]

Product data:

Product Type:	Primary Antibodies
Clone Name:	1B12
Applications:	IHC
Recommended Dilution:	IHC: 1:10 - 1:50
Reactivity:	Human
Host:	Mouse
Isotype:	IgG1, kappa
Clonality:	Monoclonal
Formulation:	This antibody is supplied as cell culture supernatant diluted in tris buffered saline, pH 7.3-7.7, with 1% BSA and <0.1% sodium azide.
Conjugation:	Unconjugated
Storage:	Store at -20°C as received.
Stability:	Stable for 12 months from date of receipt.
Gene Name:	Fc fragment of IgE receptor II
Database Link:	NP_001993 Entrez Gene 2208 Human P06734
Synonyms:	BLAST-2; CD23; CD23A; CLEC4J; FCE2; IGEBF
Note:	Anti-CD23 is a B-cell antibody that is useful in differentiating between small lymphocytic lymphoma/chronic lymphocytic leukemia (anti-CD23 immunoreactive) from mantle cell lymphoma and follicular lymphoma (immunonegative). This antibody reacts with the antigen that is found on a subpopulation of peripheral blood cells, B-lymphocytes, and on EBV transformed B-lymphoblastoid cell lines. Anti-CD23 recognizes follicular dendritic cell meshwork and follicular dendritic sarcoma.
Protein Families:	Secreted Protein, Transmembrane
Protein Pathways:	Hematopoietic cell lineage



[View online »](#)

Product images:

Immunohistochemistry staining of Paraffin Tonsil tissue by CD23 antibody (dilution: 1:10 - 1:50; visualization of staining: Membranous)