

Product datasheet for **TA327628**

CD21 (CR2) Rabbit Monoclonal Antibody [Clone ID: EP3093]

Product data:

Product Type:	Primary Antibodies
Clone Name:	EP3093
Applications:	IHC
Recommended Dilution:	IHC: 1:50 - 1:200
Reactivity:	Human
Host:	Rabbit
Isotype:	IgG
Clonality:	Monoclonal
Formulation:	This antibody is supplied as cell culture supernatant diluted in tris buffered saline, pH 7.3-7.7, with 1% BSA and <0.1% sodium azide.
Conjugation:	Unconjugated
Storage:	Store at -20°C as received.
Stability:	Stable for 12 months from date of receipt.
Gene Name:	complement component 3d receptor 2
Database Link:	NP_001006659 Entrez Gene 1380 Human P20023
Synonyms:	C3DR; CD21; CR; CVID7; SLEB9
Note:	CD21 (also known as complement receptor 2 (CR2), C3d receptor, or EBV receptor) is a 140 kDa membrane protein on B-lymphocytes to which the Epstein-Barr virus (EBV) binds during infection of these cells. The antigen is absent on T-lymphocytes, monocytes, and granulocytes. Anti-CD21 is useful in the identification of follicular dendritic cell matrix found in normal lymph node and tonsillar tissue. This antibody also labels follicular dendritic cell sarcomas. Anti-CD21 is valuable in differentiating follicular lymphoma with marginal zone differentiation from marginal zone lymphoma with follicular involvement. It also plays a role in separating among nodular lymphocyte predominant Hodgkin lymphoma, lymphocyte-rich classic Hodgkin lymphoma, and T-cell/histiocyte-rich B-cell lymphoma in combination with other B-cell and T-cell markers.

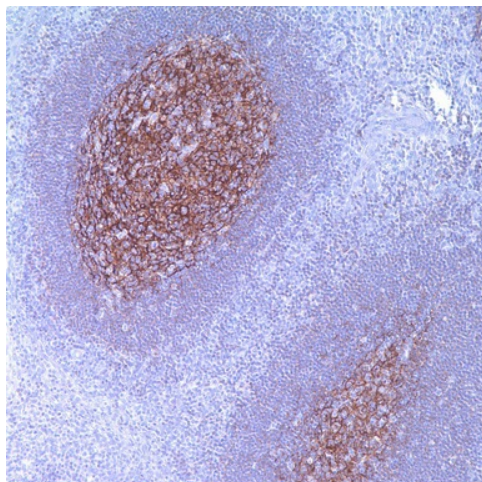


[View online »](#)

Protein Families: Druggable Genome, Transmembrane

Protein Pathways: B cell receptor signaling pathway, Complement and coagulation cascades, Hematopoietic cell lineage

Product images:



Immunohistochemistry staining of Paraffin Tonsil tissue by CD21 antibody (dilution: 1:50 - 1:200; visualization of staining: Membranous)