

## Product datasheet for **TA327626**

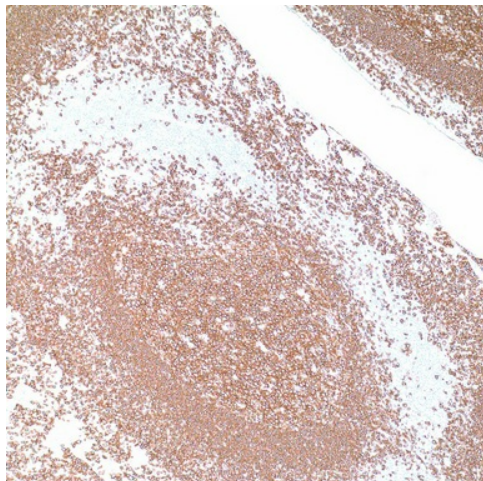
### CD20 (MS4A1) Mouse Monoclonal Antibody [Clone ID: L26]

#### Product data:

Product Type:	Primary Antibodies
Clone Name:	L26
Applications:	IHC
Recommended Dilution:	IHC: 1:100 - 1:500
Reactivity:	Human
Host:	Mouse
Isotype:	IgG2a, kappa
Clonality:	Monoclonal
Formulation:	This antibody is supplied as cell culture supernatant diluted in tris buffered saline, pH 7.3-7.7, with 1% BSA and <0.1% sodium azide.
Conjugation:	Unconjugated
Storage:	Store at -20°C as received.
Stability:	Stable for 12 months from date of receipt.
Gene Name:	membrane spanning 4-domains A1
Database Link:	<a href="#">NP_068769</a> <a href="#">Entrez Gene 931 Human P11836</a>
Synonyms:	B1; Bp35; CD20; CVID5; LEU-16; MS4A2; S7
Note:	Anti-CD20 (Pan-B-cell) reacts with a membrane antigen of B-cells. This antibody also recognizes Reed-Sternberg cells, in classic Hodgkin lymphoma, in about 20% to 40% of cases. CD20 has occasionally been detected in T-cell malignancies. However, it is a very strong marker of mature B-cell lymphomas. Anti-CD20 does not usually immunoreact with non-hematopoietic neoplasms.
Protein Families:	Druggable Genome, Transmembrane
Protein Pathways:	Hematopoietic cell lineage



[View online »](#)

**Product images:**

Immunohistochemistry staining of Paraffin Tonsil tissue by CD20 antibody (dilution: 1:100 - 1:500; visualization of staining: Membranous)