

## Product datasheet for **TA327625**

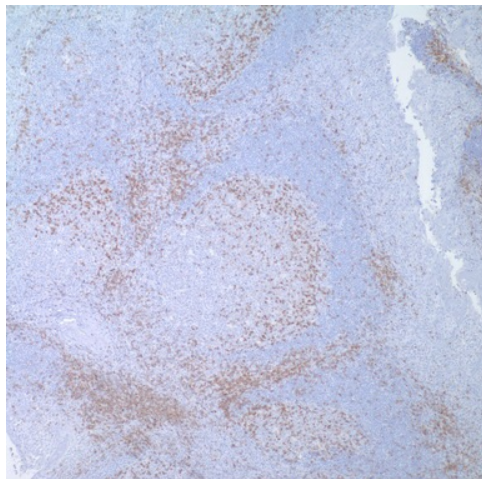
### CD2 Mouse Monoclonal Antibody [Clone ID: MRQ-11]

#### Product data:

Product Type:	Primary Antibodies
Clone Name:	MRQ-11
Applications:	IHC
Recommended Dilution:	IHC: 1:10 - 1:50
Reactivity:	Human
Host:	Mouse
Isotype:	IgG1, kappa
Clonality:	Monoclonal
Formulation:	This antibody is supplied as cell culture supernatant diluted in tris buffered saline, pH 7.3-7.7, with 1% BSA and <0.1% sodium azide.
Conjugation:	Unconjugated
Storage:	Store at -20°C as received.
Stability:	Stable for 12 months from date of receipt.
Gene Name:	CD2 molecule
Database Link:	<a href="#">NP_001758</a> <a href="#">Entrez Gene 914 Human P06729</a>
Synonyms:	LFA-2; SRBC; T11
Note:	CD2 is one of the earliest T-cell lineage restricted antigens to appear during T-cell differentiation and only rare CD2+ cells can be found in the bone marrow. Anti-CD2 is a pan-T-cell antigen marker. Anti-CD2 is therefore useful for the identification of virtually all normal T-lymphocytes. It is also very useful in the assessment of lymphoid malignancies as it is expressed in the majority of precursor and mature T-cell lymphomas and leukemias. As with other pan-T-cell antigens, CD2 may be aberrantly deleted in some neoplastic T-cell populations, especially peripheral T-cell lymphomas. When combined with anti-CD25, anti-CD2 may assist in the diagnosis of systemic mastocytosis and mastocytic leukemia.
Protein Families:	Druggable Genome, Transmembrane
Protein Pathways:	Cell adhesion molecules (CAMs), Hematopoietic cell lineage



[View online »](#)

**Product images:**

Immunohistochemistry staining of Paraffin Tonsil tissue by CD2 antibody (dilution: 1:10 - 1:50; visualization of staining: Cytoplasmic, membranous)