

## Product datasheet for **TA327623**

### CD1 (CD1A) Mouse Monoclonal Antibody [Clone ID: MTB1]

#### Product data:

Product Type:	Primary Antibodies
Clone Name:	MTB1
Applications:	IHC
Recommended Dilution:	IHC: 1:10 - 1:50
Reactivity:	Human
Host:	Mouse
Isotype:	IgG1, kappa
Clonality:	Monoclonal
Formulation:	This antibody is supplied as cell culture supernatant diluted in tris buffered saline, pH 7.3-7.7, with 1% BSA and <0.1% sodium azide.
Conjugation:	Unconjugated
Storage:	Store at -20°C as received.
Stability:	Stable for 12 months from date of receipt.
Gene Name:	CD1a molecule
Database Link:	<a href="#">NP_001754</a> <a href="#">Entrez Gene 909 Human</a> <a href="#">P06126</a>
Synonyms:	CD1; FCB6; HTA1; R4; T6
Note:	CD1a is a non-polymorphic major histocompatibility complex class I-related cell surface glycoprotein (45 to 55 kDa) and is expressed in association with $\beta$ -microglobulin. In normal tissues, anti-CD1a reacts with cortical thymocytes, Langerhans cells, interdigitating dendritic cells, and rare antigen-presenting cells of the lymph node. Anti-CD1a labels Langerhans cell histiocytosis (Histiocytosis X), extranodal histiocytic sarcoma, a subset of T-lymphoblastic lymphoma/leukemia, and interdigitating dendritic cell sarcoma of the lymph node. When combined with antibodies against TTF-1 and CD5, anti-CD1a is useful in distinguishing between pulmonary and thymic neoplasms since CD1a is consistently expressed in thymic lymphocytes in both typical and atypical thymomas, but only focally in 1/6 of thymic carcinomas and not in lymphocytes in pulmonary neoplasms. Anti-CD1a was reported to be a new marker for perivascular epithelial cell tumor (PEComa).

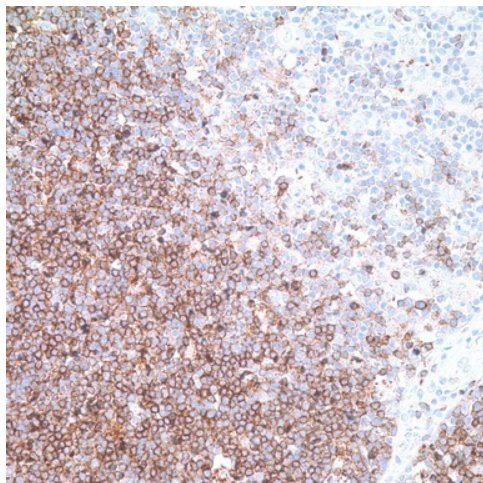


[View online »](#)

Protein Families: Druggable Genome, Transmembrane

Protein Pathways: Hematopoietic cell lineage

**Product images:**



Immunohistochemistry staining of Paraffin Tonsil, thymus tissue by CD1a antibody (dilution: 1:10 - 1:50; visualization of staining: Membranous)