

Product datasheet for **TA327617**

CD11c (ITGAX) Mouse Monoclonal Antibody [Clone ID: 5D11]

Product data:

Product Type:	Primary Antibodies
Clone Name:	5D11
Applications:	IHC
Recommended Dilution:	IHC: 1:20 - 1:80
Reactivity:	Human
Host:	Mouse
Isotype:	IgG2a
Clonality:	Monoclonal
Formulation:	This antibody is supplied as cell culture supernatant diluted in tris buffered saline, pH 7.3-7.7, with 1% BSA and <0.1% sodium azide.
Conjugation:	Unconjugated
Storage:	Store at -20°C as received.
Stability:	Stable for 12 months from date of receipt.
Gene Name:	integrin subunit alpha X
Database Link:	NP_000878 Entrez Gene 3687 Human P20702
Synonyms:	CD11C; SLEB6



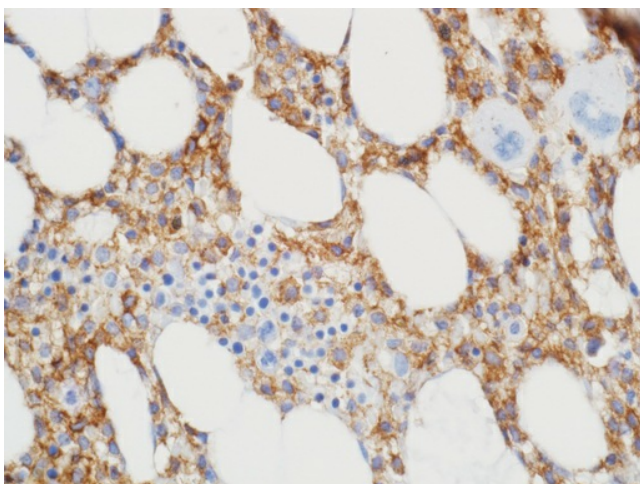
[View online »](#)

Note: Hairy cell leukemia (HCL) is a distinctive yet uncommon chronic B-cell lymphoproliferative disorder predominantly involving the bone marrow and spleen. Bone marrow aspiration and trephine biopsy are necessary for making a definitive diagnosis and treatment of hairy cell leukemia (HCL). However, aspiration is successful in only 10% of patients due to diffusely increased reticulin fibers in the background marrow stroma in association with HCL infiltrates. In such situations, examination of bone marrow trephine histology together with immunohistochemical analysis is the only available method to make a definitive diagnosis of HCL. Korinna et al. investigated 31 bone marrow trephines with low-level HCL infiltrates and showed that the anti-CD11c (clone 5D11) was able to detect HCL to a level of 2% tumor cells in BM biopsies. This indicates that immunohistochemical staining of formalin-fixed, decalcified bone marrow trephine biopsies with anti-CD11c can be used both for early diagnosis of HCL and for detection of residual disease following therapy. It is important to note that the anti-CD11c-positive interstitial macrophages, which were generally more weakly stained than the hairy cells, did not interfere with the identification of the more strongly stained tumor cells. Among malignant lymphomas, CD11c is consistently expressed in HCL, although it is also rarely detected in B-CLL/small lymphocytic lymphoma and splenic MZL.

Protein Families: Druggable Genome, Transmembrane

Protein Pathways: Regulation of actin cytoskeleton

Product images:



Immunohistochemistry staining of Paraffin Hairy cell leukemia, bone marrow tissue by CD11c antibody (dilution: 1:20 - 1:80; visualization of staining: Cytoplasmic)