

Product datasheet for **TA327616**

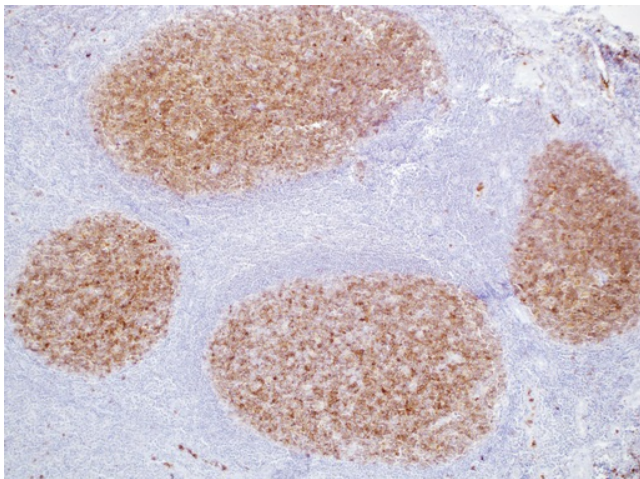
CD10 (MME) Mouse Monoclonal Antibody [Clone ID: 56C6]

Product data:

Product Type:	Primary Antibodies
Clone Name:	56C6
Applications:	IHC
Recommended Dilution:	IHC: 1:10 - 1:50
Reactivity:	Human
Host:	Mouse
Isotype:	IgG1
Clonality:	Monoclonal
Formulation:	This antibody is supplied as cell culture supernatant diluted in tris buffered saline, pH 7.3-7.7, with 1% BSA and <0.1% sodium azide.
Conjugation:	Unconjugated
Storage:	Store at -20°C as received.
Stability:	Stable for 12 months from date of receipt.
Gene Name:	membrane metallo-endopeptidase
Database Link:	NP_009218 Entrez Gene 4311 Human P08473
Synonyms:	CALLA; CD10; CMT2T; NEP; SCA43; SFE
Note:	The antibody against CD10, common acute lymphoblastic leukemia antigen (CALLA), is a useful marker for the characterization of leukemias and lymphomas. This antibody labels lymphoblastic, Burkitt, and follicular lymphomas. Also, anti-CD10 detects the antigen of glomerular epithelial cells and the brush border of the proximal tubules; this characteristic may be helpful in interpreting renal ontogenesis in conjunction with other markers. Other non-lymphoid cells that are reactive with anti-CD10 are breast myoepithelial cells, bile canaliculi, neutrophils, stromal cells of bone marrow, and fibroblasts. Therefore, anti-CD10 has been used in classification of carcinomas, lymphomas, and leukemias.
Protein Families:	Druggable Genome, Protease, Transmembrane
Protein Pathways:	Alzheimer's disease, Hematopoietic cell lineage, Renin-angiotensin system



[View online »](#)

Product images:

Immunohistochemistry staining of Paraffin Kidney, tonsil tissue by CD10 antibody (dilution: 1:10 - 1:50; visualization of staining: Cytoplasmic, membranous)