

## Product datasheet for **TA327615**

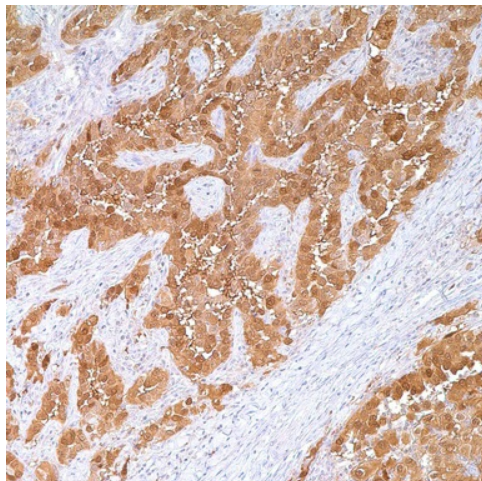
### Calretinin (CALB2) Rabbit Polyclonal Antibody

#### Product data:

Product Type:	Primary Antibodies
Applications:	IHC
Recommended Dilution:	IHC: 1:100 - 1:500
Reactivity:	Human
Host:	Rabbit
Clonality:	Polyclonal
Formulation:	This antibody is supplied as cell culture supernatant diluted in tris buffered saline, pH 7.3-7.7, with 1% BSA and <0.1% sodium azide.
Conjugation:	Unconjugated
Storage:	Store at -20°C as received.
Stability:	Stable for 12 months from date of receipt.
Gene Name:	calbindin 2
Database Link:	<a href="#">NP_001731</a> <a href="#">Entrez Gene 794 Human</a> <a href="#">P22676</a>
Synonyms:	CAB29; CAL2; CR
Note:	Anti-calretinin has been shown to be useful in differentiating mesothelioma from adenocarcinomas of the lung and other sources. Anti-calretinin has also demonstrated utility in differentiating adrenal cortical neoplasms from pheochromocytomas.



[View online »](#)

**Product images:**

Immunohistochemistry staining of Paraffin Mesothelioma tissue by Calretinin antibody (dilution: 1:100 - 1:500; visualization of staining: Cytoplasmic, nuclear)