

Product datasheet for **TA327612**

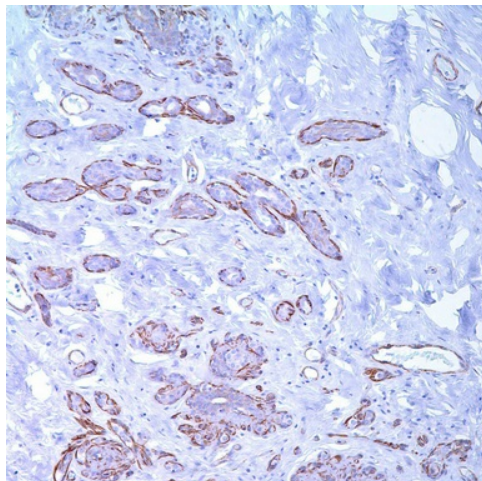
Caldesmon (CALD1) Rabbit Monoclonal Antibody [Clone ID: E-89]

Product data:

Product Type:	Primary Antibodies
Clone Name:	E-89
Applications:	IHC
Recommended Dilution:	IHC: 1:25 - 1:100
Reactivity:	Human
Host:	Rabbit
Isotype:	IgG
Clonality:	Monoclonal
Formulation:	This antibody is supplied as cell culture supernatant diluted in tris buffered saline, pH 7.3-7.7, with 1% BSA and <0.1% sodium azide.
Conjugation:	Unconjugated
Storage:	Store at -20°C as received.
Stability:	Stable for 12 months from date of receipt.
Gene Name:	caldesmon 1
Database Link:	NP_004333 Entrez Gene 800 Human Q05682
Synonyms:	CDM; H-CAD; HCAD; L-CAD; LCAD; NAG22
Note:	Caldesmon is a regulatory protein found in smooth muscle and other tissues which interacts with actin, myosin, tropomyosin, and calmodulin. Anti-caldesmon labels smooth muscle and tumors of smooth muscle, myofibroblastic, and myoepithelial differentiation. Anti-caldesmon has also been used to differentiate epithelioid mesothelioma from serous papillary carcinoma of the ovary.
Protein Pathways:	Vascular smooth muscle contraction



[View online »](#)

Product images:

Immunohistochemistry staining of Paraffin Appendix, breast tissue by Caldesmon antibody (dilution: 1:25 - 1:100; visualization of staining: Cytoplasmic)