

Product datasheet for **TA327611**

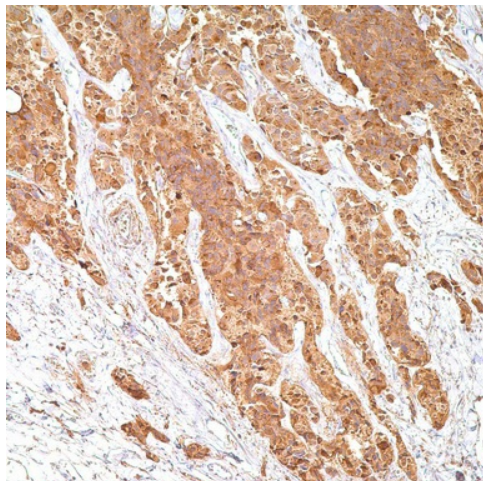
Calcitonin (CALCA) Rabbit Polyclonal Antibody

Product data:

Product Type:	Primary Antibodies
Applications:	IHC
Recommended Dilution:	IHC: 1:200 - 1:1000
Reactivity:	Human
Host:	Rabbit
Clonality:	Polyclonal
Formulation:	This antibody is supplied as cell culture supernatant diluted in tris buffered saline, pH 7.3-7.7, with 1% BSA and <0.1% sodium azide.
Conjugation:	Unconjugated
Storage:	Store at -20°C as received.
Stability:	Stable for 12 months from date of receipt.
Gene Name:	calcitonin related polypeptide alpha
Database Link:	NP_001732 Entrez Gene 796 Human P01258
Synonyms:	CALC1; CGRP; CGRP-I; CGRP1; CT; KC; PCT
Note:	Immunohistochemical staining with anti-calcitonin antibody has proven to be an effective way of demonstrating calcitonin-producing cells in the thyroid. C-cell hyperplasia and medullary thyroid carcinomas stain positive for calcitonin. Studies of calcitonin have resulted in the identification of a wide spectrum of C-cell proliferative abnormalities.
Protein Families:	Druggable Genome, Secreted Protein



[View online »](#)

Product images:

Immunohistochemistry staining of Paraffin Medullary carcinoma of thyroid tissue by Calcitonin antibody (dilution: 1:200 - 1:1000; visualization of staining: Cytoplasmic)