

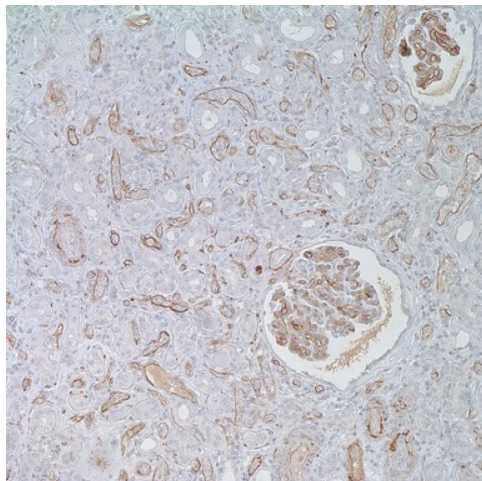
Product datasheet for **TA327608**

Complement C3 (C3) Rabbit Polyclonal Antibody

Product data:

Product Type:	Primary Antibodies
Applications:	IHC
Recommended Dilution:	IHC: 1:100 - 1:500
Reactivity:	Human
Host:	Rabbit
Clonality:	Polyclonal
Formulation:	This antibody is supplied as cell culture supernatant diluted in tris buffered saline, pH 7.3-7.7, with 1% BSA and <0.1% sodium azide.
Conjugation:	Unconjugated
Storage:	Store at -20°C as received.
Stability:	Stable for 12 months from date of receipt.
Gene Name:	complement component 3
Database Link:	NP_000055 Entrez Gene 718 Human P01024
Synonyms:	AHUS5; ARMD9; ASP; C3a; C3b; CPAMD1; HEL-S-62p
Note:	Complement component C3 plays a central role in the activation of complement system. Its activation is required for both classical and alternative complement activation pathways. C3d deposition in the renal transplant PTCs (peritubular capillaries) is indicative of AR (acute rejection) with subsequent high probability of graft loss. Anti-C3d, combined with anti-C4d, can be utilized as a tool for diagnosis of AR that may serve to warrant prompt and aggressive anti-rejection treatment. Pfaltz et al. have shown that anti-C3d labeled the epidermal basement membrane in 97% (31/32) cases of bullous pemphigoid (BP), with none of the normal controls demonstrating such findings. In the same study 27% (3/11) cases of pemphigus vulgaris (PV) demonstrated intercellular C3d deposition. Anti-C3d immunohistochemistry is a helpful adjunct in the diagnosis of BP (and perhaps PV), especially in the cases in which only formalin-fixed, paraffin-embedded tissue is available for analysis.
Protein Families:	Druggable Genome
Protein Pathways:	Complement and coagulation cascades, Systemic lupus erythematosus


[View online »](#)

Product images:

Immunohistochemistry staining of Paraffin
Acutely rejected kidney transplant tissue by C3d
antibody (dilution: 1:100 - 1:500; visualization of
staining: Membranous, cytoplasmic)