

Product datasheet for **TA327606**

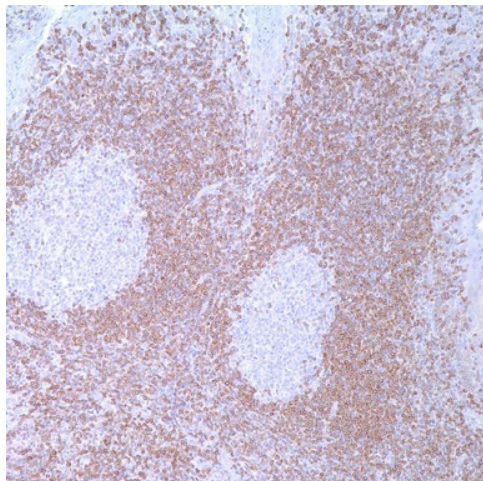
BCL2 Mouse Monoclonal Antibody [Clone ID: 124]

Product data:

Product Type:	Primary Antibodies
Clone Name:	124
Applications:	IHC
Recommended Dilution:	IHC: 1:100 - 1:500
Reactivity:	Human
Host:	Mouse
Isotype:	IgG1, kappa
Clonality:	Monoclonal
Formulation:	This antibody is supplied as cell culture supernatant diluted in tris buffered saline, pH 7.3-7.7, with 1% BSA and <0.1% sodium azide.
Conjugation:	Unconjugated
Storage:	Store at -20°C as received.
Stability:	Stable for 12 months from date of receipt.
Gene Name:	B-cell CLL/lymphoma 2
Database Link:	NP_000624 Entrez Gene 596 Human P10415
Synonyms:	Bcl-2; PPP1R50
Note:	Anti-BCL2 has shown consistent negative reaction on reactive germinal centers and positive staining of neoplastic follicles in follicular lymphoma. Consequently, this antibody is valuable when distinguishing between reactive and neoplastic follicular proliferation in lymph node biopsies. This antibody may also be used in distinguishing between those follicular lymphomas that express BCL2 protein and the small number in which the neoplastic cells are BCL2 negative.
Protein Families:	Druggable Genome, ES Cell Differentiation/IPS, Stem cell - Pluripotency, Transmembrane
Protein Pathways:	Amyotrophic lateral sclerosis (ALS), Apoptosis, Colorectal cancer, Focal adhesion, Neurotrophin signaling pathway, Pathways in cancer, Prostate cancer, Small cell lung cancer



[View online »](#)

Product images:

Immunohistochemistry staining of Paraffin Tonsil tissue by BCL2 antibody (dilution: 1:100 - 1:500; visualization of staining: Cytoplasmic)