

Product datasheet for **TA327604**

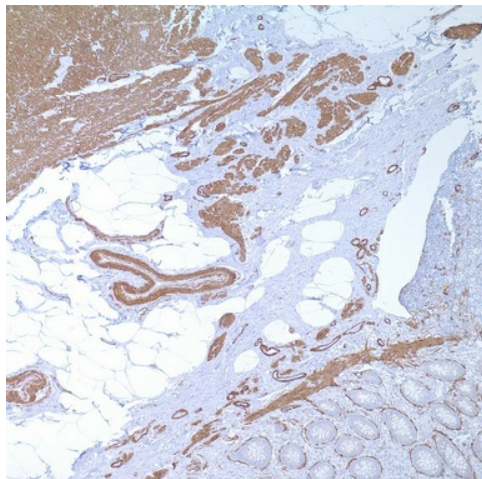
alpha smooth muscle Actin (ACTA2) Mouse Monoclonal Antibody [Clone ID: 1A4]

Product data:

Product Type:	Primary Antibodies
Clone Name:	1A4
Applications:	IHC
Recommended Dilution:	IHC: 1:100 - 1:500
Reactivity:	Human
Host:	Mouse
Isotype:	IgG, kappa
Clonality:	Monoclonal
Formulation:	This antibody is supplied as cell culture supernatant diluted in tris buffered saline, pH 7.3-7.7, with 1% BSA and <0.1% sodium azide.
Conjugation:	Unconjugated
Storage:	Store at -20°C as received.
Stability:	Stable for 12 months from date of receipt.
Gene Name:	actin, alpha 2, smooth muscle, aorta
Database Link:	NP_001604 Entrez Gene 59 Human P62736
Synonyms:	AAT6; ACTSA; MYMY5
Note:	Actin is a major component of the cytoskeleton and is present in most cell types. Anti-smooth muscle actin does not stain cardiac or skeletal muscle; however, it does stain myofibroblasts and myoepithelial cells. This antibody could be used together with anti-muscle specific actin in making a diagnosis of smooth muscle and skeletal muscle tumors. In most cases of rhabdomyosarcoma, this antibody yields negative results whereas anti-muscle specific actin is positive. Leiomyosarcomas are positive with both anti-muscle specific actin and anti-smooth muscle actin.
Protein Pathways:	Vascular smooth muscle contraction



[View online »](#)

Product images:

Immunohistochemistry staining of Paraffin Appendix tissue by Actin, Smooth Muscle antibody (dilution: 1:100 - 1:500; visualization of staining: Cytoplasmic)