

## Product datasheet for **TA327578**

### CREB1 Rabbit Polyclonal Antibody

#### Product data:

Product Type:	Primary Antibodies
Applications:	ICC/IF, IHC, WB
Recommended Dilution:	WB 1:500 - 1:2000;IF 1:50- 1:200
Reactivity:	Human, Mouse, Rat
Host:	Rabbit
Isotype:	IgG
Clonality:	Polyclonal
Immunogen:	A phospho specific peptide corresponding to residues surrounding Ser133 of human CREB
Formulation:	Store at -20C or -80C. Avoid freeze / thaw cycles. Buffer: PBS with 0.02% sodium azide, 50% glycerol, pH7.3
Concentration:	lot specific
Purification:	Affinity purification
Conjugation:	Unconjugated
Storage:	Store at -20°C as received.
Stability:	Stable for 12 months from date of receipt.
Gene Name:	cAMP responsive element binding protein 1
Database Link:	<a href="#">NP_004370</a> <a href="#">Entrez Gene 12912 Mouse</a> <a href="#">Entrez Gene 81646 Rat</a> <a href="#">Entrez Gene 1385 Human</a> <a href="#">P16220</a>



[View online »](#)

**Background:**

CREB is a bZIP transcription factor that activates target genes through cAMP response elements. CREB is able to mediate signals from numerous physiological stimuli, resulting in regulation of a broad array of cellular responses. While CREB is expressed in numerous tissues, it plays a large regulatory role in the nervous system. CREB is believed to play a key role in promoting neuronal survival, precursor proliferation, neurite outgrowth, and neuronal differentiation in certain neuronal populations. Additionally, CREB signaling is involved in learning and memory in several organisms. CREB is able to selectively activate numerous downstream genes through interactions with different dimerization partners. CREB is activated by phosphorylation at Ser133 by various signaling pathways including Erk, Ca<sup>2+</sup>, and stress signaling. Some of the kinases involved in phosphorylating CREB at Ser133 are p90RSK, MSK, CaMKIV, and MAPKAPK-2.

**Synonyms:**

CREB

**Note:**

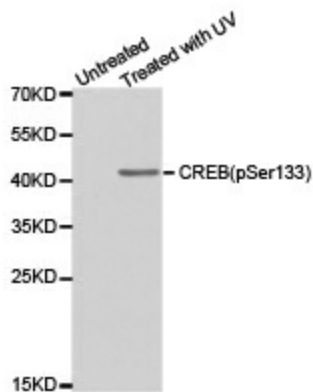
phospho

**Protein Families:**

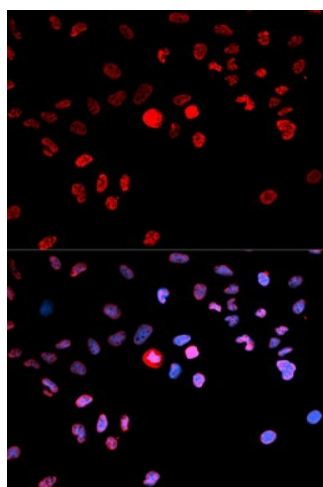
Druggable Genome, Transcription Factors

**Protein Pathways:**

Antigen processing and presentation, Huntington's disease, Melanogenesis, Prostate cancer

**Product images:**

Western blot analysis of extracts from HeLa cells untreated or treated with UV, using Phospho-CREB-Ser133 antibody.



Immunofluorescence analysis of MCF7 cell using Phospho-CREB1-S133 antibody. Blue: DAPI for nuclear staining.