

## Product datasheet for **TA327550**

### H3FT (HIST3H3) Rabbit Polyclonal Antibody

#### Product data:

|                         |  |
|-------------------------|--|
| Product Type:           | Primary Antibodies   |
| Applications:           | ICC/IF, IP, WB   |
| Recommended Dilution:   | WB 1:500 - 1:2000;IF 1:50 - 1:200;IP 1:50 - 1:100  |
| Reactivity:             | Human, Mouse, Rat, Other (Wide Range)  |
| Host:                   | Rabbit   |
| Isotype:                | IgG  |
| Clonality:              | Polyclonal   |
| Immunogen:              | A synthetic methylated peptide corresponding to residues surrounding R26 of human histone H3   |
| Formulation:            | Store at -20C or -80C. Avoid freeze / thaw cycles. Buffer: PBS with 0.02% sodium azide, 50% glycerol, pH7.3                          |
| Concentration:          | lot specific   |
| Purification:           | Affinity purification  |
| Conjugation:            | Unconjugated   |
| Storage:                | Store at -20°C as received.  |
| Stability:              | Stable for 12 months from date of receipt.   |
| Predicted Protein Size: | 15 kDa   |
| Gene Name:              | histone cluster 3, H3  |
| Database Link:          | <a href="#">NP_003484</a><br><a href="#">Entrez Gene 691496 Rat</a> <a href="#">Entrez Gene 8290 Human</a><br><a href="#">Q16695</a> |



[View online »](#)

**Background:**

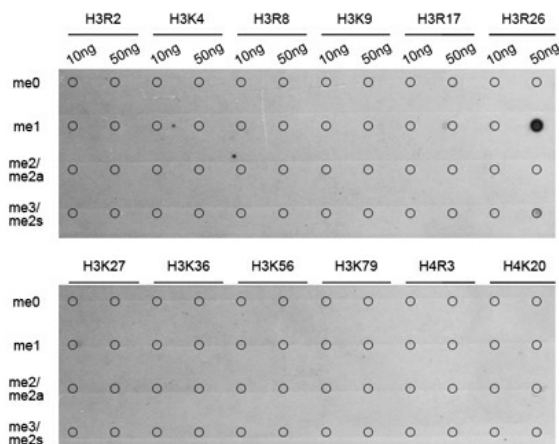
Modulation of chromatin structure plays an important role in the regulation of transcription in eukaryotes. The nucleosome, made up of DNA wound around eight core histone proteins (two each of H2A, H2B, H3, and H4), is the primary building block of chromatin. The amino-terminal tails of core histones undergo various post-translational modifications, including acetylation, phosphorylation, methylation, and ubiquitination. These modifications occur in response to various stimuli and have a direct effect on the accessibility of chromatin to transcription factors and, therefore, gene expression. In most species, histone H2B is primarily acetylated at Lys5, 12, 15, and 20. Histone H3 is primarily acetylated at Lys9, 14, 18, 23, 27, and 56. Acetylation of H3 at Lys9 appears to have a dominant role in histone deposition and chromatin assembly in some organisms. Phosphorylation at Ser10, Ser28, and Thr11 of histone H3 is tightly correlated with chromosome condensation during both mitosis and meiosis. Phosphorylation at Thr3 of histone H3 is highly conserved among many species and is catalyzed by the kinase has, pin. Immunostaining with phospho-specific antibodies in mammalian cells reveals mitotic phosphorylation at Thr3 of H3 in prophase and its dephosphorylation during anaphase.

**Synonyms:**

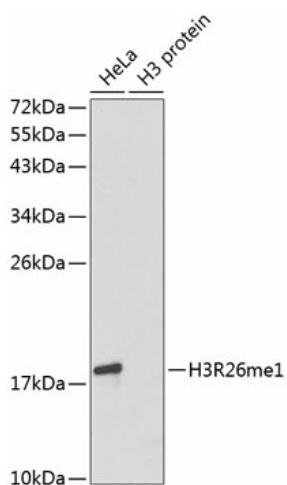
g; H3; H3.4; H3FT; H3t

**Protein Pathways:**

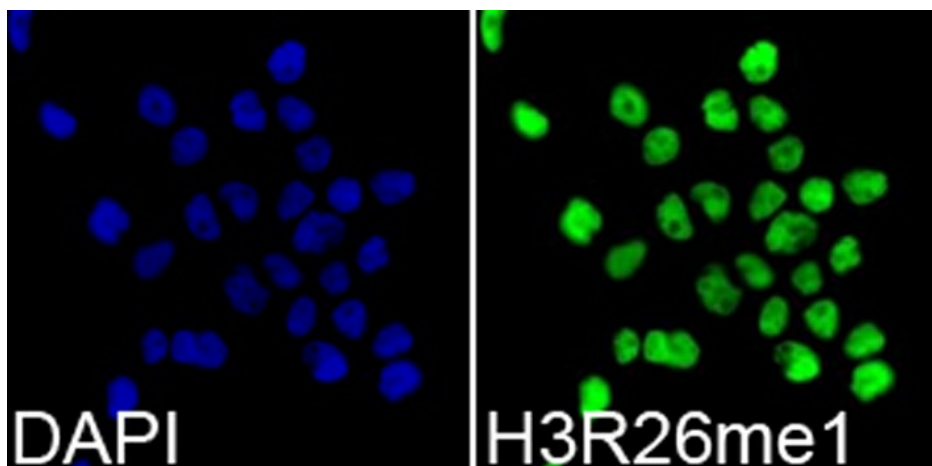
Systemic lupus erythematosus

**Product images:**


Dot-blot analysis of all sorts of methylation peptides using MonoMethyl-Histone H3-R26 antibody (TA327550).



Western blot analysis of extracts of various cell lines, using MonoMethyl-Histone H3-R26 antibody (TA327550). | Secondary antibody: HRP Goat Anti-Rabbit IgG (H+L) at 1:10000 dilution. | Lysates/proteins: 25ug per lane. | Blocking buffer: 3% nonfat dry milk in TBST.



Immunofluorescence analysis of 293T cells using MonoMethyl-Histone H3-R26 antibody (TA327550). Blue: DAPI for nuclear staining.