

## Product datasheet for **TA327549S**

### ARF6 Rabbit Polyclonal Antibody

#### Product data:

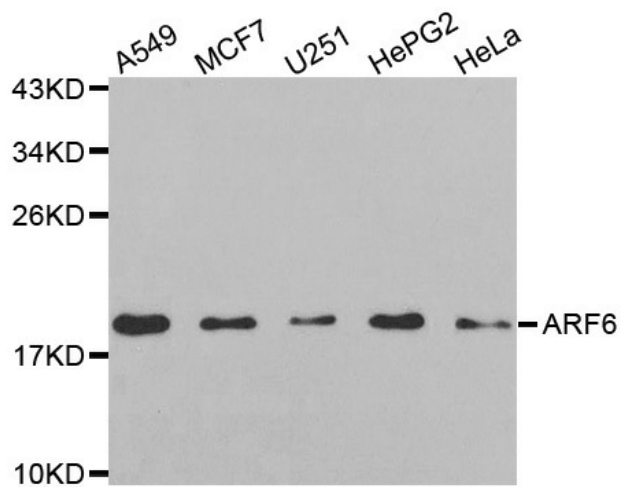
Product Type:	Primary Antibodies
Applications:	WB
Recommended Dilution:	WB 1:500 - 1:2000
Reactivity:	Human, Rat
Host:	Rabbit
Isotype:	IgG
Clonality:	Polyclonal
Immunogen:	A synthetic peptide of human ARF6
Formulation:	Store at -20C or -80C. Avoid freeze / thaw cycles. Buffer: PBS with 0.02% sodium azide, 50% glycerol, pH7.3
Concentration:	lot specific
Purification:	Affinity purification
Conjugation:	Unconjugated
Storage:	Store at -20°C as received.
Stability:	Stable for 12 months from date of receipt.
Predicted Protein Size:	20 kDa
Gene Name:	ADP ribosylation factor 6
Database Link:	<a href="#">NP_001654</a> <a href="#">Entrez Gene 79121 Rat</a> <a href="#">Entrez Gene 382 Human</a> <a href="#">P62330</a>
Background:	This gene encodes a member of the human ARF gene family, which is part of the RAS superfamily. The ARF genes encode small guanine nucleotide-binding proteins that stimulate the ADP-ribosyltransferase activity of cholera toxin and play a role in vesicular trafficking and as activators of phospholipase D. The product of this gene is localized to the plasma membrane, and regulates vesicular trafficking, remodelling of membrane lipids, and signaling pathways that lead to actin remodeling. A pseudogene of this gene is located on chromosome 7.
Synonyms:	DKFZp564M0264



[View online »](#)

Protein Pathways: Endocytosis, Fc gamma R-mediated phagocytosis

### Product images:



Western blot analysis of extracts of various cell lines, using ARF6 antibody.