

## Product datasheet for **TA327538S**

### **H3FA (HIST1H3A) Rabbit Polyclonal Antibody**

#### **Product data:**

<b>Product Type:</b>	Primary Antibodies
<b>Applications:</b>	ChIP, ChIP-seq, ICC/IF, IHC, IP, WB
<b>Recommended Dilution:</b>	WB 1:500 - 1:2000;IF 1:50 - 1:200;IP 1:50 - 1:200;ChIP 1:20 - 1:100
<b>Reactivity:</b>	Human, Mouse, Rat, Other (Wide Range)
<b>Host:</b>	Rabbit
<b>Isotype:</b>	IgG
<b>Clonality:</b>	Polyclonal
<b>Immunogen:</b>	A synthetic mono-methylated peptide peptide corresponding to residues surrounding Arg17of human histone H3
<b>Formulation:</b>	PBS with 0.09% Sodium azide,50% glycerol,pH7.3.
<b>Concentration:</b>	lot specific
<b>Purification:</b>	Affinity purification
<b>Conjugation:</b>	Unconjugated
<b>Storage:</b>	Store at -20°C as received.
<b>Stability:</b>	Stable for 12 months from date of receipt.
<b>Predicted Protein Size:</b>	15 kDa
<b>Gene Name:</b>	histone cluster 1, H3a
<b>Database Link:</b>	<a href="#">NP_003520</a> <a href="#">Entrez Gene 360198 MouseEntrez Gene 679994 RatEntrez Gene 8350 Human P68431</a>



[View online »](#)

**Background:**

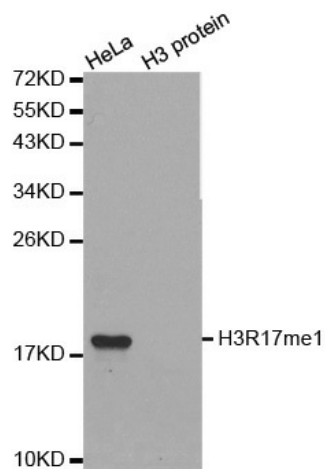
Modulation of chromatin structure plays an important role in the regulation of transcription in eukaryotes. The nucleosome, made up of DNA wound around eight core histone proteins (two each of H2A, H2B, H3, and H4), is the primary building block of chromatin. The amino-terminal tails of core histones undergo various post-translational modifications, including acetylation, phosphorylation, methylation, and ubiquitination. These modifications occur in response to various stimuli and have a direct effect on the accessibility of chromatin to transcription factors and, therefore, gene expression. In most species, histone H2B is primarily acetylated at Lys5, 12, 15, and 20. Histone H3 is primarily acetylated at Lys9, 14, 18, 23, 27, and 56. Acetylation of H3 at Lys9 appears to have a dominant role in histone deposition and chromatin assembly in some organisms. Phosphorylation at Ser10, Ser28, and Thr11 of histone H3 is tightly correlated with chromosome condensation during both mitosis and meiosis. Phosphorylation at Thr3 of histone H3 is highly conserved among many species and is catalyzed by the kinase haspin. Immunostaining with phospho-specific antibodies in mammalian cells reveals mitotic phosphorylation at Thr3 of H3 in prophase and its dephosphorylation during anaphase.

**Synonyms:**

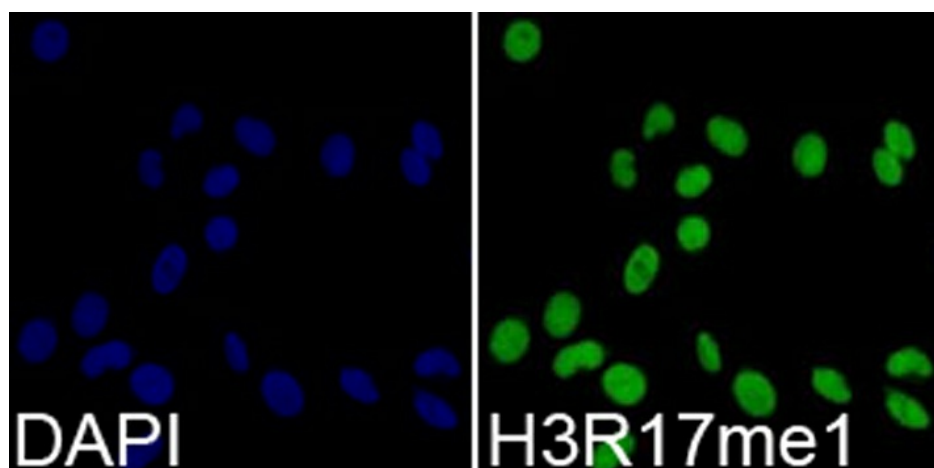
A; H3; H3FA

**Protein Pathways:**

Systemic lupus erythematosus

**Product images:**

Western blot analysis of extracts of HeLa cell line and H3 protein expressed in E.coli., using H3R17me1 antibody.



Immunofluorescence analysis of 293T cell using H3R17me1 antibody. Blue: DAPI for nuclear staining.