

## Product datasheet for **TA327534**

### SFTPA1 Rabbit Polyclonal Antibody

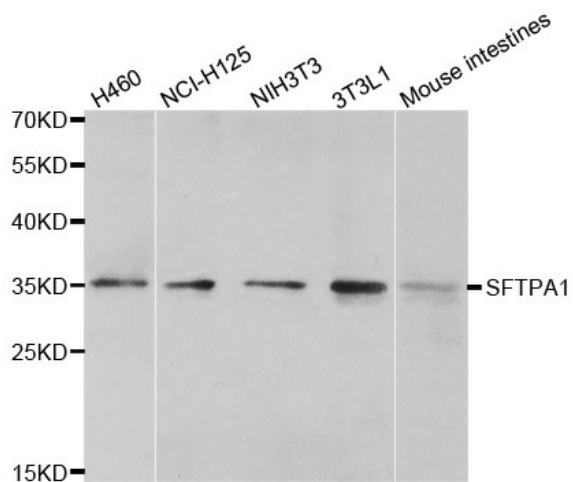
#### Product data:

Product Type:	Primary Antibodies
Applications:	IHC, WB
Recommended Dilution:	WB 1:500 - 1:1000
Reactivity:	Human, Mouse, Rat
Host:	Rabbit
Isotype:	IgG
Clonality:	Polyclonal
Immunogen:	A synthetic peptide of human SFTPA1
Formulation:	Store at -20C or -80C. Avoid freeze / thaw cycles. Buffer: PBS with 0.02% sodium azide, 50% glycerol, pH7.3
Concentration:	lot specific
Purification:	Affinity purification
Conjugation:	Unconjugated
Storage:	Store at -20°C as received.
Stability:	Stable for 12 months from date of receipt.
Predicted Protein Size:	28 kDa
Gene Name:	surfactant protein A1
Database Link:	<a href="#">NP_005402</a> <a href="#">Entrez Gene 20387 Mouse</a> <a href="#">Entrez Gene 24773 Rat</a> <a href="#">Entrez Gene 653509 Human</a> <a href="#">Q8IWL2</a>
Background:	This gene encodes a lung surfactant protein that is a member of a subfamily of C-type lectins called collectins. The encoded protein binds specific carbohydrate moieties found on lipids and on the surface of microorganisms. This protein plays an essential role in surfactant homeostasis and in the defense against respiratory pathogens. Mutations in this gene are associated with idiopathic pulmonary fibrosis. Alternate splicing results in multiple transcript variants.
Synonyms:	COLEC4; PSAP; PSP-A; PSPA; SFTP1; SFTPA1B; SP-A; SP-A1; SPA; SPA1



[View online »](#)

## Product images:



Western blot analysis of extracts of various cell lines, using SFTPA1 antibody.