

Product datasheet for TA327525S

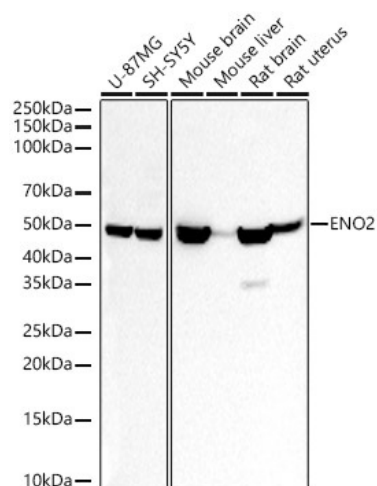
NSE (ENO2) Rabbit Polyclonal Antibody

Product data:

Product Type:	Primary Antibodies
Applications:	ELISA, WB
Recommended Dilution:	WB, 1:500 - 1:1000 ELISA, Recommended starting concentration is 1 µg/mL. Please optimize the concentration based on your specific assay requirements.
Reactivity:	Human, Mouse, Rat
Host:	Rabbit
Isotype:	IgG
Clonality:	Polyclonal
Formulation:	Store at -20C or -80C. Avoid freeze / thaw cycles. Buffer: PBS with 0.02% sodium azide, 50% glycerol, pH7.3
Concentration:	lot specific
Purification:	Affinity purification
Conjugation:	Unconjugated
Storage:	Store at -20°C. Avoid freeze / thaw cycles.
Stability:	Stable for 12 months from date of receipt.
Predicted Protein Size:	47kDa
Gene Name:	enolase 2
Database Link:	NP_001966 Entrez Gene 13807 Mouse Entrez Gene 24334 Rat Entrez Gene 2026 Human P09104
Background:	This gene encodes one of the three enolase isoenzymes found in mammals. This isoenzyme, a homodimer, is found in mature neurons and cells of neuronal origin. A switch from alpha enolase to gamma enolase occurs in neural tissue during development in rats and primates.
Synonyms:	HEL-S-279; NSE
Protein Pathways:	Glycolysis / Gluconeogenesis, Metabolic pathways, RNA degradation


[View online »](#)

Product images:



Western blot analysis of various lysates