

## Product datasheet for **TA327516S**

### Sumo 3 (SUMO3) Rabbit Polyclonal Antibody

#### Product data:

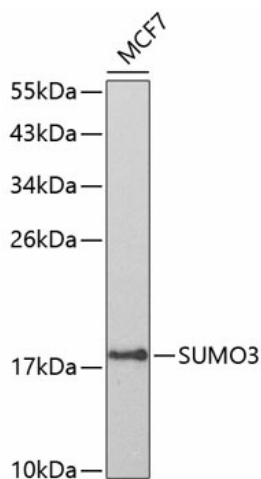
Product Type:	Primary Antibodies
Applications:	ELISA, IHC, WB
Recommended Dilution:	WB, 1:1000 - 1:2000 IHC-P, 1:50 - 1:100 ELISA, Recommended starting concentration is 1 µg/mL. Please optimize the concentration based on your specific assay requirements.
Reactivity:	Human, Mouse, Rat
Host:	Rabbit
Isotype:	IgG
Clonality:	Polyclonal
Formulation:	Store at -20C or -80C. Avoid freeze / thaw cycles. Buffer: PBS with 0.02% sodium azide, 50% glycerol, pH7.3
Concentration:	lot specific
Purification:	Affinity purification
Conjugation:	Unconjugated
Storage:	Store at -20°C. Avoid freeze / thaw cycles.
Stability:	Stable for 12 months from date of receipt.
Predicted Protein Size:	12kDa
Gene Name:	small ubiquitin-like modifier 3
Database Link:	<a href="#">NP_008867</a> <a href="#">Entrez Gene 20610 Mouse</a> <a href="#">Entrez Gene 499417 Rat</a> <a href="#">Entrez Gene 6612 Human</a> <a href="#">P55854</a>
Background:	This gene encodes a member of the small ubiquitin-related modifier (SUMO) family of eukaryotic proteins. The encoded protein is covalently conjugated to other proteins via a post-translation modification known as sumoylation. Sumoylation may play a role in a wide variety of cellular processes, including nuclear transport, DNA replication and repair, mitosis, transcriptional regulation, and signal transduction. Alternatively spliced transcript variants encoding distinct proteins have been described.


[View online »](#)

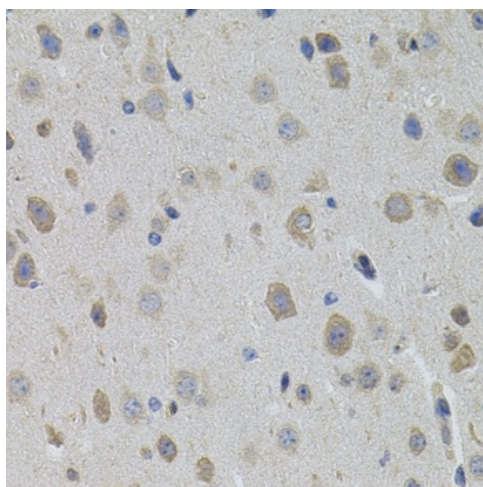
**Synonyms:** SMT3A; Smt3B; SMT3H1; SUMO-3

**Protein Families:** Druggable Genome

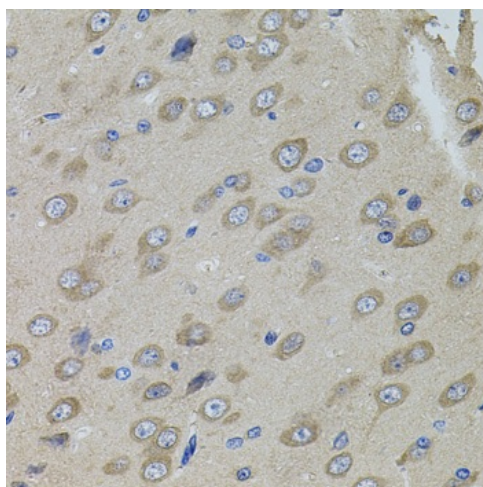
## Product images:



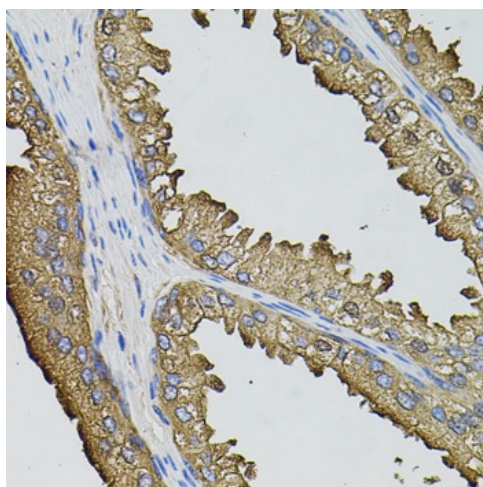
Western blot analysis of lysates from MCF-7 cells



Immunohistochemistry analysis of paraffin-embedded Mouse brain using SUMO3 Rabbit pAb ([TA327516]) (40x lens). Microwave antigen retrieval performed with 0.01M PBS Buffer (pH 7.2) prior to IHC staining.



Immunohistochemistry analysis of paraffin-embedded Rat brain using SUMO3 Rabbit pAb ([TA327516]) (40x lens). Microwave antigen retrieval performed with 0.01M PBS Buffer (pH 7.2) prior to IHC staining.



Immunohistochemistry analysis of paraffin-embedded Human prostate using SUMO3 Rabbit pAb ([TA327516]) (40x lens). Microwave antigen retrieval performed with 0.01M PBS Buffer (pH 7.2) prior to IHC staining.