

Product datasheet for **TA327511**

SLC1A4 Rabbit Polyclonal Antibody

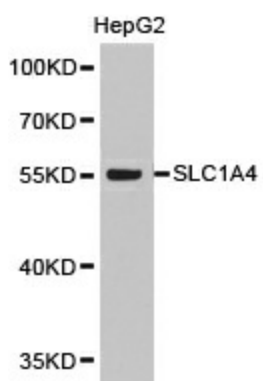
Product data:

Product Type:	Primary Antibodies
Applications:	WB
Recommended Dilution:	WB: 1:500-1:2000
Reactivity:	Human, Mouse, Rat
Host:	Rabbit
Isotype:	IgG
Clonality:	Polyclonal
Immunogen:	A synthetic peptide of human SLC1A4
Formulation:	Store at -20C or -80C. Avoid freeze / thaw cycles. Buffer: PBS with 0.02% sodium azide, 50% glycerol, pH7.3
Concentration:	lot specific
Purification:	Affinity purification
Conjugation:	Unconjugated
Storage:	Store at -20°C as received.
Stability:	Stable for 12 months from date of receipt.
Gene Name:	solute carrier family 1 member 4
Database Link:	NP_003029 Entrez Gene 55963 Mouse Entrez Gene 305540 Rat Entrez Gene 6509 Human P43007
Background:	SLC1A4, also known as ASCT1, is a neutral amino acid transporter. Its other name, ASCT1, was given because it mediates obligatory exchange of alanine, serine, cysteine, and threonine. SLC1A4 mediates the efflux of glutamate from the neuron into the synaptic junction via calcium-independent release, as well as mediating the efflux of L-serine from glial cells and its uptake by neurons. SLC1A4-mediated transport is shown to involve a symmetrical potassium-independent electroneutral exchange of neutral amino acids and sodium, such that the current activated during transport is carried only by chloride ions.
Synonyms:	ASCT1; SATT; SPATCCM
Protein Families:	Druggable Genome, Transmembrane



[View online »](#)

Product images:



Western blot analysis of extracts of HepG2 cell lines, using SLC1A4 antibody.