

Product datasheet for **TA327504**

PDX1 Rabbit Polyclonal Antibody

Product data:

Product Type:	Primary Antibodies
Applications:	WB
Recommended Dilution:	WB 1:500 - 1:1000
Reactivity:	Mouse
Host:	Rabbit
Isotype:	IgG
Clonality:	Polyclonal
Immunogen:	A synthetic peptide of human PDX1
Formulation:	Store at -20C or -80C. Avoid freeze / thaw cycles. Buffer: PBS with 0.02% sodium azide, 50% glycerol, pH7.3
Concentration:	lot specific
Purification:	Affinity purification
Conjugation:	Unconjugated
Storage:	Store at -20°C as received.
Stability:	Stable for 12 months from date of receipt.
Predicted Protein Size:	31 kDa
Gene Name:	pancreatic and duodenal homeobox 1
Database Link:	NP_000200 Entrez Gene 18609 Mouse P52945
Background:	The protein encoded by this gene is a transcriptional activator of several genes; including insulin; somatostatin; glucokinase; islet amyloid polypeptide; and glucose transporter type 2. The encoded nuclear protein is involved in the early development of the pancreas and plays a major role in glucose-dependent regulation of insulin gene expression. Defects in this gene are a cause of pancreatic agenesis; which can lead to early-onset insulin-dependent diabetes mellitus (NIDDM); as well as maturity onset diabetes of the young type 4 (MODY4).
Synonyms:	GSF; IDX-1; IPF1; IUF1; MODY4; PAGEN1; PDX-1; STF-1

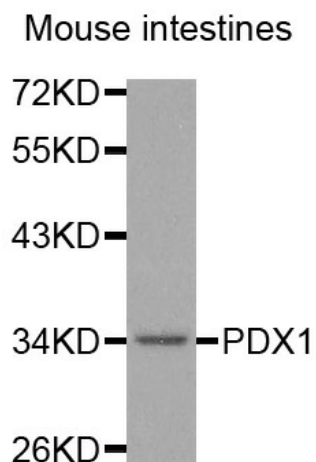


[View online »](#)

Protein Families: Embryonic stem cells, ES Cell Differentiation/IPS, Induced pluripotent stem cells, Transcription Factors

Protein Pathways: Maturity onset diabetes of the young, Type II diabetes mellitus

Product images:



Western blot analysis of extracts of Mouse intestines tissue, using PDX1 antibody.