

## Product datasheet for **TA327502**

### **PAX2 Rabbit Polyclonal Antibody**

#### **Product data:**

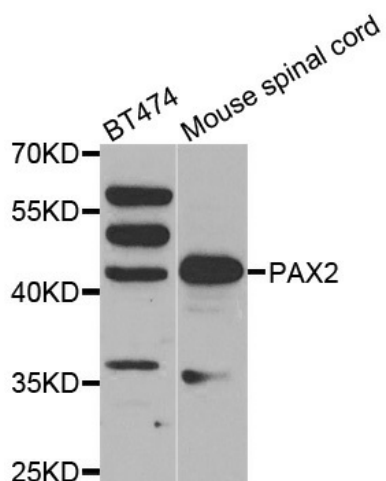
Product Type:	Primary Antibodies
Applications:	ICC/IF, WB
Recommended Dilution:	WB 1:500 - 1:2000;IF 1:50 - 1:200
Reactivity:	Human, Mouse, Rat
Host:	Rabbit
Isotype:	IgG
Clonality:	Polyclonal
Immunogen:	A synthetic peptide of human PAX2
Formulation:	Store at -20C or -80C. Avoid freeze / thaw cycles. Buffer: PBS with 0.02% sodium azide, 50% glycerol, pH7.3
Concentration:	lot specific
Purification:	Affinity purification
Conjugation:	Unconjugated
Storage:	Store at -20°C as received.
Stability:	Stable for 12 months from date of receipt.
Predicted Protein Size:	45 kDa
Gene Name:	paired box 2
Database Link:	<a href="#">NP_000269</a> <a href="#">Entrez Gene 18504 MouseEntrez Gene 293992 RatEntrez Gene 5076 Human Q02962</a>
Background:	PAX2 encodes paired box gene 2, one of many human homologues of the Drosophila melanogaster gene prd. The central feature of this transcription factor gene family is the conserved DNA-binding paired box domain. PAX2 is believed to be a target of transcriptional suppression by the tumor suppressor gene WT1. Mutations within PAX2 have been shown to result in optic nerve colobomas and renal hypoplasia. Alternative splicing of this gene results in multiple transcript variants.
Synonyms:	FSGS7; PAPRS



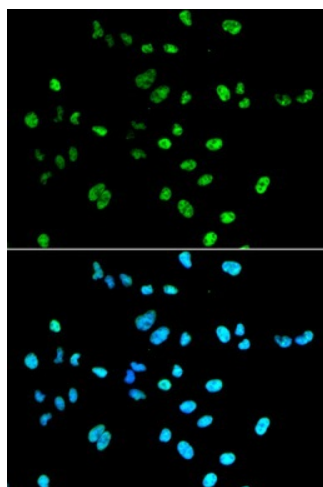
[View online »](#)

Protein Families: Druggable Genome

### Product images:



Western blot analysis of extracts of various cell lines, using PAX2 antibody.



Immunofluorescence analysis of A549 cell using PAX2 antibody. Blue: DAPI for nuclear staining.