

Product datasheet for **TA327491**

E Cadherin (CDH1) Rabbit Polyclonal Antibody

Product data:

Product Type:	Primary Antibodies
Applications:	IHC, WB
Recommended Dilution:	WB 1:500 - 1:2000;IHC 1:50 - 1:200
Reactivity:	Human, Mouse, Rat
Host:	Rabbit
Isotype:	IgG
Clonality:	Polyclonal
Immunogen:	A synthetic peptide of human CDH1
Formulation:	Store at -20C or -80C. Avoid freeze / thaw cycles. Buffer: PBS with 0.02% sodium azide, 50% glycerol, pH7.3
Concentration:	lot specific
Purification:	Affinity purification
Conjugation:	Unconjugated
Storage:	Store at -20°C as received.
Stability:	Stable for 12 months from date of receipt.
Predicted Protein Size:	135 kDa
Gene Name:	cadherin 1
Database Link:	NP_004351 Entrez Gene 12550 Mouse Entrez Gene 83502 Rat Entrez Gene 999 Human P12830

Background: This gene is a classical cadherin from the cadherin superfamily. The encoded protein is a calcium dependent cell-cell adhesion glycoprotein comprised of five extracellular cadherin repeats, a transmembrane region and a highly conserved cytoplasmic tail. Mutations in this gene are correlated with gastric, breast, colorectal, thyroid and ovarian cancer. Loss of function is thought to contribute to progression in cancer by increasing proliferation, invasion, and/or metastasis. The ectodomain of this protein mediates bacterial adhesion to mammalian cells and the cytoplasmic domain is required for internalization. Identified transcript variants arise from mutation at consensus splice sites.



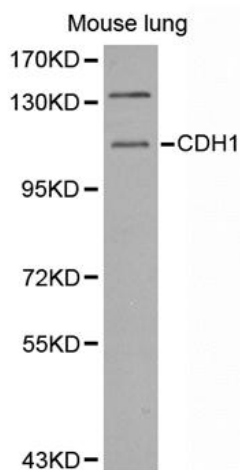
[View online »](#)

Synonyms: Arc-1; CD324; CDHE; ECAD; LCAM; UVO

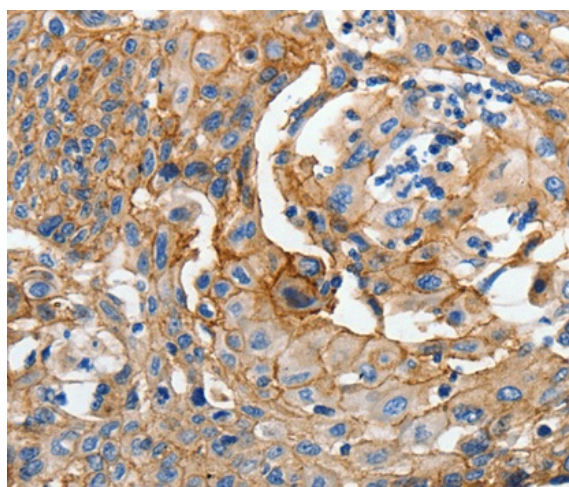
Protein Families: Druggable Genome, ES Cell Differentiation/IPS, Transmembrane

Protein Pathways: Adherens junction, Bladder cancer, Cell adhesion molecules (CAMs), Endometrial cancer, Melanoma, Pathogenic Escherichia coli infection, Pathways in cancer, Thyroid cancer

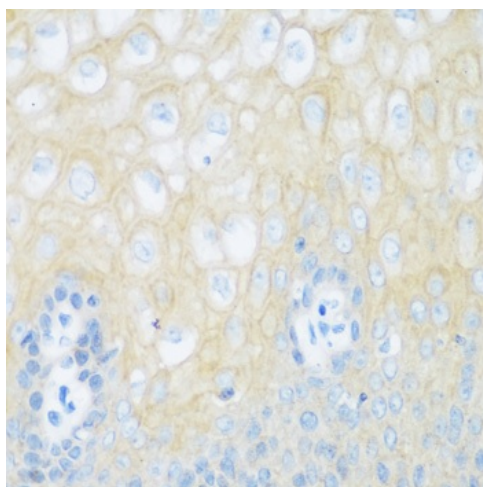
Product images:



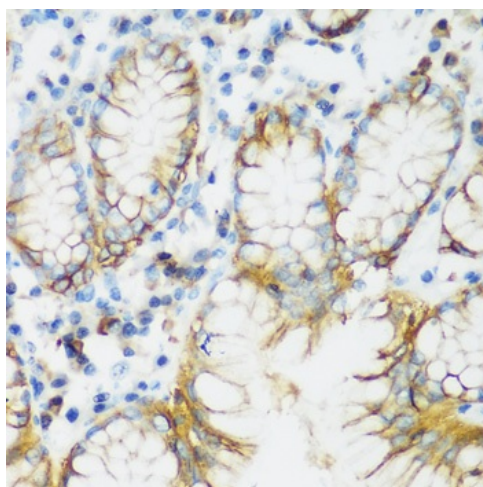
Western blot analysis of extracts of mouse lung, using CDH1 antibody.



Immunohistochemistry of paraffin-embedded human cervical cancer tissue, using CDH1 antibody.



Immunohistochemistry of paraffin-embedded human esophagus using CDH1 antibody at dilution of 1:200 (40x lens).



Immunohistochemistry of paraffin-embedded human gastric using CDH1 antibody at dilution of 1:200 (40x lens).