

Product datasheet for **TA327462**

HCN1 Rabbit Polyclonal Antibody

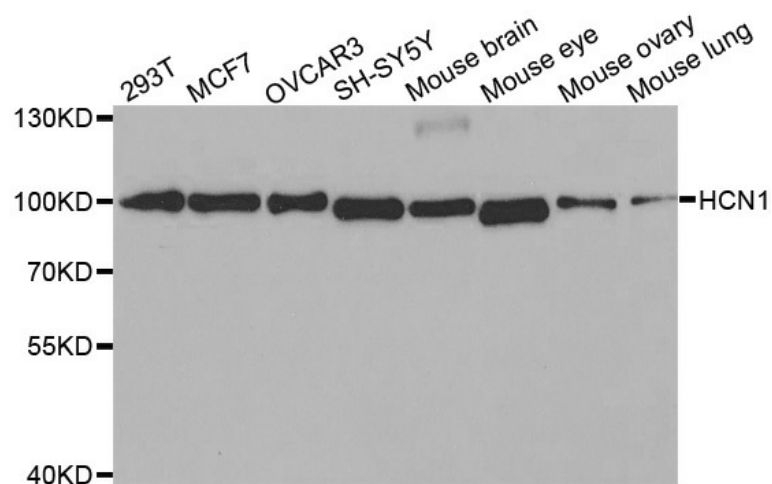
Product data:

Product Type:	Primary Antibodies
Applications:	WB
Recommended Dilution:	WB 1:500 - 1:2000
Reactivity:	Human, Mouse
Host:	Rabbit
Isotype:	IgG
Clonality:	Polyclonal
Immunogen:	A synthetic peptide of human HCN1
Formulation:	Store at -20C or -80C. Avoid freeze / thaw cycles. Buffer: PBS with 0.02% sodium azide, 50% glycerol, pH7.3
Concentration:	lot specific
Purification:	Affinity purification
Conjugation:	Unconjugated
Storage:	Store at -20°C as received.
Stability:	Stable for 12 months from date of receipt.
Predicted Protein Size:	99 kDa
Gene Name:	hyperpolarization activated cyclic nucleotide gated potassium channel 1
Database Link:	NP_066550 Entrez Gene 15165 Mouse Entrez Gene 348980 Human O60741
Background:	The membrane protein encoded by this gene is a hyperpolarization-activated cation channel that contributes to the native pacemaker currents in heart and neurons. The encoded protein can homodimerize or heterodimerize with other pore-forming subunits to form a potassium channel. This channel may act as a receptor for sour tastes.
Synonyms:	BCNG-1; BCNG1; EIEE24; HAC-2
Protein Families:	Druggable Genome, Ion Channels: Cyclic nucleotide gated, Transmembrane



[View online »](#)

Product images:



Western blot analysis of extracts of various cell lines, using HCN1 antibody.