

Product datasheet for **TA327461S**

KCNH2 Rabbit Polyclonal Antibody

Product data:

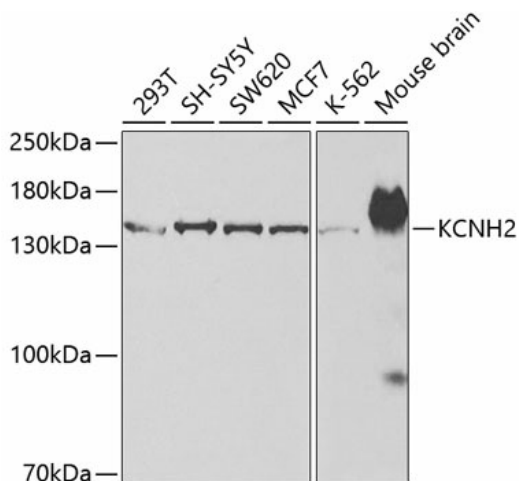
Product Type:	Primary Antibodies
Applications:	ELISA, ICC/IF, IHC, WB
Recommended Dilution:	WB, 1:500 - 1:2000 IHC-P, 1:50 - 1:200 IF/ICC, 1:50 - 1:200 ELISA, Recommended starting concentration is 1 µg/mL. Please optimize the concentration based on your specific assay requirements.
Reactivity:	Human, Mouse
Host:	Rabbit
Isotype:	IgG
Clonality:	Polyclonal
Formulation:	PBS with 0.05% proclin300, 50% glycerol, pH7.3.
Concentration:	lot specific
Purification:	Affinity purification
Conjugation:	Unconjugated
Storage:	Store at -20°C. Avoid freeze / thaw cycles.
Stability:	Stable for 12 months from date of receipt.
Predicted Protein Size:	127kDa
Gene Name:	potassium voltage-gated channel subfamily H member 2
Database Link:	NP_000229 Entrez Gene 16511 Mouse Entrez Gene 3757 Human Q12809
Background:	This gene encodes a component of a voltage-activated potassium channel found in cardiac muscle, nerve cells, and microglia. Four copies of this protein interact with one copy of the KCNE2 protein to form a functional potassium channel. Mutations in this gene can cause long QT syndrome type 2 (LQT2). Transcript variants encoding distinct isoforms have been identified.
Synonyms:	ERG-1; ERG1; H-ERG; HERG; HERG1; Kv11.1; LQT2; SQT1



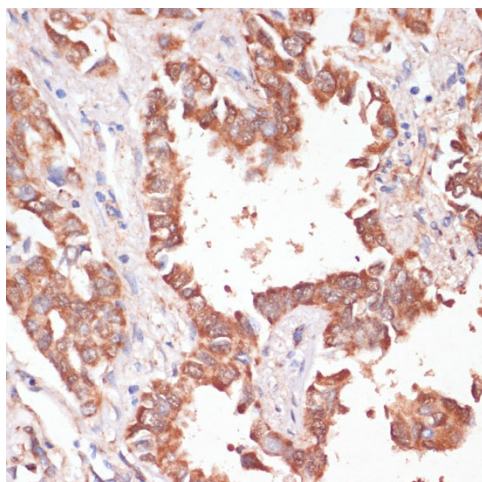
[View online »](#)

Protein Families: Druggable Genome, Ion Channels: Potassium, Transcription Factors, Transmembrane

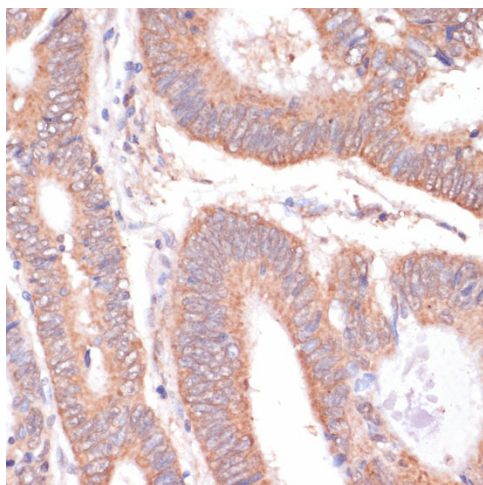
Product images:



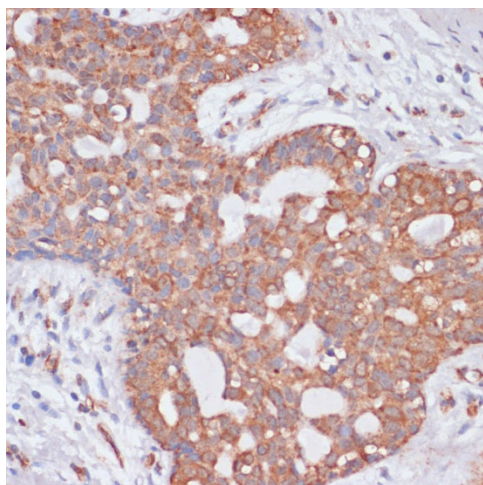
Western blot analysis of various lysates using KCNH2 Rabbit pAb ([TA327461S]) at 1:500 dilution. Secondary antibody: HRP-conjugated Goat anti-Rabbit IgG (H+L) (AS014) at 1:10000 dilution. Lysates/proteins: 25µg per lane. Blocking buffer: 3% nonfat dry milk in TBST. Detection: ECL Enhanced Kit (RM00021). Exposure time: 30s.



Immunohistochemistry analysis of paraffin-embedded Human lung cancer using KCNH2 Rabbit pAb ([TA327461S]) at dilution of 1:100 (40x lens). Microwave antigen retrieval performed with 0.01M PBS Buffer (pH 7.2) prior to IHC staining.



Immunohistochemistry analysis of paraffin-embedded Human colon carcinoma using KCNH2 Rabbit pAb ([TA327461]) at dilution of 1:100 (40x lens). Microwave antigen retrieval performed with 0.01M PBS Buffer (pH 7.2) prior to IHC staining.



Immunohistochemistry analysis of paraffin-embedded Human breast cancer using KCNH2 Rabbit pAb ([TA327461]) at dilution of 1:100 (40x lens). Microwave antigen retrieval performed with 0.01M PBS Buffer (pH 7.2) prior to IHC staining.