

Product datasheet for **TA327455**

alpha 1 Glycine Receptor (GLRA1) Rabbit Polyclonal Antibody

Product data:

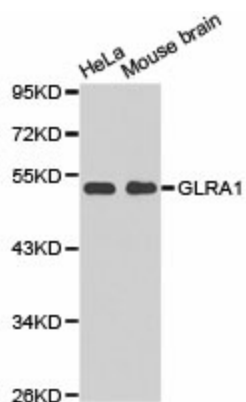
Product Type:	Primary Antibodies
Applications:	WB
Recommended Dilution:	WB: 1:500-1:2000
Reactivity:	Human, Mouse, Rat
Host:	Rabbit
Isotype:	IgG
Clonality:	Polyclonal
Immunogen:	A synthetic peptide of human GLRA1
Formulation:	Store at -20C or -80C. Avoid freeze / thaw cycles. Buffer: PBS with 0.02% sodium azide, 50% glycerol, pH7.3
Concentration:	lot specific
Purification:	Affinity purification
Conjugation:	Unconjugated
Storage:	Store at -20°C as received.
Stability:	Stable for 12 months from date of receipt.
Gene Name:	glycine receptor alpha 1
Database Link:	NP_000162 Entrez Gene 14654 Mouse Entrez Gene 25674 Rat Entrez Gene 2741 Human P23415
Background:	Glycine receptor subunit alpha-1 is a protein that in humans is encoded by the GLRA1 gene. The protein encoded by this gene is a subunit of a pentameric inhibitory glycine receptor. The receptor mediates postsynaptic inhibition in the central nervous system. Defects in this gene are a cause of startle disease (STHE), also known as hereditary hyperekplexia or congenital stiff-person syndrome. Two transcript variants encoding different isoforms have been found for this gene.
Synonyms:	HKPX1; STHE
Protein Families:	Druggable Genome, Ion Channels: Cys-loop Receptors, Transmembrane



[View online »](#)

Protein Pathways: Neuroactive ligand-receptor interaction

Product images:



Western blot analysis of extracts of various cell lines, using GLRA1 antibody. (1: HeLa cell lysate 2: Mouse brain tissue lysate)