

## Product datasheet for **TA327454**

### Gelsolin (GSN) Rabbit Polyclonal Antibody

#### Product data:

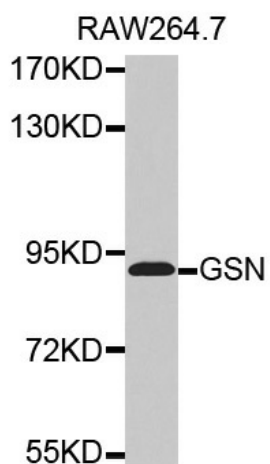
Product Type:	Primary Antibodies
Applications:	WB
Recommended Dilution:	WB 1:500 - 1:2000
Reactivity:	Mouse, Human, Rat
Host:	Rabbit
Isotype:	IgG
Clonality:	Polyclonal
Immunogen:	A synthetic peptide of human GSN
Formulation:	Store at -20C or -80C. Avoid freeze / thaw cycles. Buffer: PBS with 0.02% sodium azide, 50% glycerol, pH7.3
Concentration:	lot specific
Purification:	Affinity purification
Conjugation:	Unconjugated
Storage:	Store at -20°C as received.
Stability:	Stable for 12 months from date of receipt.
Predicted Protein Size:	90 kDa
Gene Name:	gelsolin
Database Link:	<a href="#">NP_000168</a> <a href="#">Entrez Gene 227753 MouseEntrez Gene 296654 RatEntrez Gene 2934 Human P06396</a>
Background:	The protein encoded by this gene binds to the "plus" ends of actin monomers and filaments to prevent monomer exchange. The encoded calcium-regulated protein functions in both assembly and disassembly of actin filaments. Defects in this gene are a cause of familial amyloidosis Finnish type (FAF). Multiple transcript variants encoding several different isoforms have been found for this gene.
Synonyms:	ADF; AGEL
Protein Families:	Druggable Genome, Secreted Protein



[View online »](#)

Protein Pathways: Fc gamma R-mediated phagocytosis, Regulation of actin cytoskeleton

**Product images:**



Western blot analysis of extracts of RAW264.7 cell lysate, using GSN antibody.