

## Product datasheet for **TA327441**

### Endothelin B Receptor (EDNRB) Rabbit Polyclonal Antibody

#### Product data:

Product Type:	Primary Antibodies
Applications:	WB
Recommended Dilution:	WB 1:500 - 1:2000
Reactivity:	Mouse, Human
Host:	Rabbit
Isotype:	IgG
Clonality:	Polyclonal
Immunogen:	A synthetic peptide of human EDNRB
Formulation:	Store at -20C or -80C. Avoid freeze / thaw cycles. Buffer: PBS with 0.02% sodium azide, 50% glycerol, pH7.3
Concentration:	lot specific
Purification:	Affinity purification
Conjugation:	Unconjugated
Storage:	Store at -20°C as received.
Stability:	Stable for 12 months from date of receipt.
Predicted Protein Size:	50 kDa
Gene Name:	endothelin receptor type B
Database Link:	<a href="#">NP_000106</a> <a href="#">Entrez Gene 13618 Mouse</a> <a href="#">Entrez Gene 1910 Human</a> <a href="#">P24530</a>
Background:	The protein encoded by this gene is a G protein-coupled receptor which activates a phosphatidylinositol-calcium second messenger system. Its ligand, endothelin, consists of a family of three potent vasoactive peptides: ET1, ET2, and ET3. Studies suggest that the multigenic disorder, Hirschsprung disease type 2, is due to mutations in the endothelin receptor type B gene. Alternatively spliced transcript variants encoding different isoforms have been found for this gene.
Synonyms:	ABCD5; ET-B; ET-BR; ETB; ETBR; ETRB; HSCR; HSCR2; WS4A

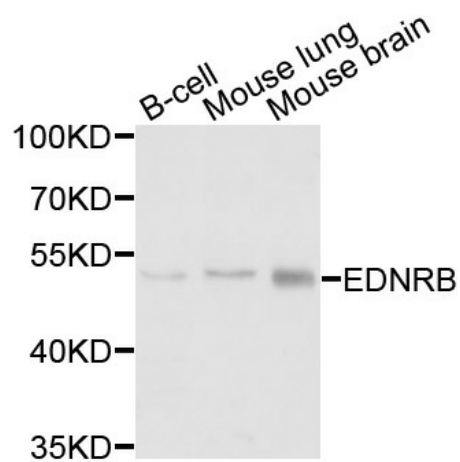


[View online »](#)

Protein Families: Druggable Genome, GPCR, Transmembrane

Protein Pathways: Calcium signaling pathway, Melanogenesis, Neuroactive ligand-receptor interaction

### Product images:



Western blot analysis of extracts of various cells, using EDNRB antibody.