

Product datasheet for **TA327402**

Dopamine beta Hydroxylase (DBH) Rabbit Polyclonal Antibody

Product data:

Product Type:	Primary Antibodies
Applications:	WB
Recommended Dilution:	WB 1:500 - 1:1000
Reactivity:	Human, Mouse, Rat
Host:	Rabbit
Isotype:	IgG
Clonality:	Polyclonal
Immunogen:	Recombinant protein of human DBH
Formulation:	Store at -20C or -80C. Avoid freeze / thaw cycles. Buffer: PBS with 0.02% sodium azide, 50% glycerol, pH7.3
Concentration:	lot specific
Purification:	Affinity purification
Conjugation:	Unconjugated
Storage:	Store at -20°C as received.
Stability:	Stable for 12 months from date of receipt.
Predicted Protein Size:	69 kDa
Gene Name:	dopamine beta-hydroxylase
Database Link:	NP_000778 Entrez Gene 13166 MouseEntrez Gene 25699 RatEntrez Gene 1621 Human P09172



[View online »](#)

Background:

Dopamine β -Hydroxylase (DBH) is an enzyme of the copper type II ascorbate-dependent mono-oxygenase family. This enzyme forms homotetramers composed of two noncovalently bound disulfide-linked dimers and is found as both membrane-associated and soluble forms. The soluble form is present in the lumen of secretory granules and is released from cells by exocytosis. DBH converts dopamine to noradrenaline. Deficiency in this enzyme causes a rare disease characterized by a complete absence of noradrenaline and adrenaline in plasma together with increased plasma dopamine levels. Orthostatic hypotension, the main symptom of DBH deficiency, can be alleviated by administration of dihydroxyphenylserine, a synthetic precursor of noradrenaline.

Synonyms:

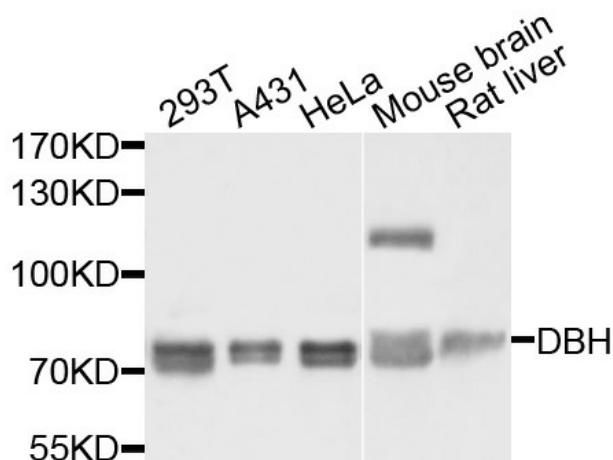
DBM

Protein Families:

Druggable Genome, Secreted Protein, Transmembrane

Protein Pathways:

Metabolic pathways, Tyrosine metabolism

Product images:

Western blot analysis of extracts of various cells, using DBH antibody.