

Product datasheet for **TA327388S**

ALDH4A1 Rabbit Polyclonal Antibody

Product data:

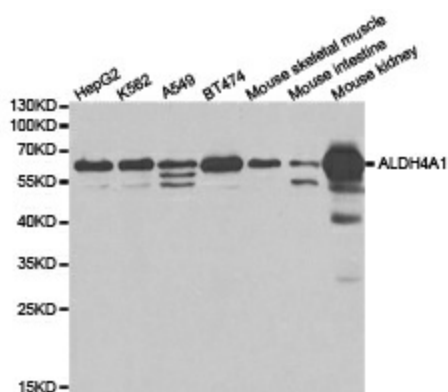
Product Type:	Primary Antibodies
Applications:	ICC/IF, WB
Recommended Dilution:	WB 1:500 - 1:2000;IF 1:50- 1:200
Reactivity:	Human, Mouse, Rat
Host:	Rabbit
Isotype:	IgG
Clonality:	Polyclonal
Immunogen:	Recombinant protein of human ALDH4A1
Formulation:	Store at -20C or -80C. Avoid freeze / thaw cycles. Buffer: PBS with 0.02% sodium azide, 50% glycerol, pH7.3
Concentration:	lot specific
Purification:	Affinity purification
Conjugation:	Unconjugated
Storage:	Store at -20°C as received.
Stability:	Stable for 12 months from date of receipt.
Gene Name:	aldehyde dehydrogenase 4 family member A1
Database Link:	NP_003739 Entrez Gene 212647 Mouse Entrez Gene 641316 Rat Entrez Gene 8659 Human P30038
Background:	This protein belongs to the aldehyde dehydrogenase family of proteins. This enzyme is a mitochondrial matrix NAD-dependent dehydrogenase which catalyzes the second step of the proline degradation pathway, converting pyrroline-5-carboxylate to glutamate. Deficiency of this enzyme is associated with type II hyperprolinemia, an autosomal recessive disorder characterized by accumulation of delta-1-pyrroline-5-carboxylate (P5C) and proline. Alternatively spliced transcript variants encoding different isoforms have been identified for this gene.
Synonyms:	ALDH4; P5CD; P5CDh
Protein Families:	Druggable Genome



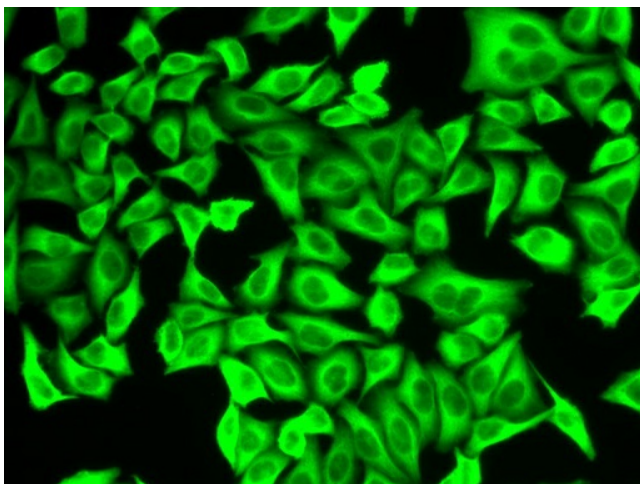
[View online »](#)

Protein Pathways: Alanine, aspartate and glutamate metabolism, Arginine and proline metabolism, Metabolic pathways

Product images:



Western blot analysis of extracts of various cell lines, using ALDH4A1 antibody.



Immunofluorescence analysis of A549 cell using ALDH4A1 antibody.