

## Product datasheet for **TA327385S**

### MEK6 (MAP2K6) Rabbit Polyclonal Antibody

#### Product data:

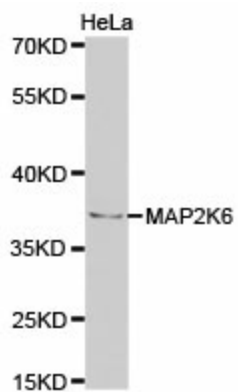
Product Type:	Primary Antibodies
Applications:	ICC/IF, WB
Recommended Dilution:	WB 1:500-1:2000;IF 1:50-1:200
Reactivity:	Human, Mouse, Rat
Host:	Rabbit
Isotype:	IgG
Clonality:	Polyclonal
Immunogen:	Recombinant protein of human MAP2K6
Formulation:	Store at -20C or -80C. Avoid freeze / thaw cycles. Buffer: PBS with 0.02% sodium azide, 50% glycerol, pH7.3
Concentration:	lot specific
Purification:	Affinity purification
Conjugation:	Unconjugated
Storage:	Store at -20°C as received.
Stability:	Stable for 12 months from date of receipt.
Gene Name:	mitogen-activated protein kinase kinase 6
Database Link:	<a href="#">NP_002749</a> <a href="#">Entrez Gene 26399 Mouse</a> <a href="#">Entrez Gene 114495 Rat</a> <a href="#">Entrez Gene 5608 Human</a> <a href="#">P52564</a>
Background:	This gene encodes a member of the dual specificity protein kinase family, which functions as a mitogen-activated protein (MAP) kinase kinase. MAP kinases, also known as extracellular signal-regulated kinases (ERKs), act as an integration point for multiple biochemical signals. This protein phosphorylates and activates p38 MAP kinase in response to inflammatory cytokines or environmental stress. As an essential component of p38 MAP kinase mediated signal transduction pathway, this gene is involved in many cellular processes such as stress induced cell cycle arrest, transcription activation and apoptosis.
Synonyms:	MAPKK6; MEK6; MKK6; PRKMK6; SAPKK-3; SAPKK3
Protein Families:	Druggable Genome, Protein Kinase



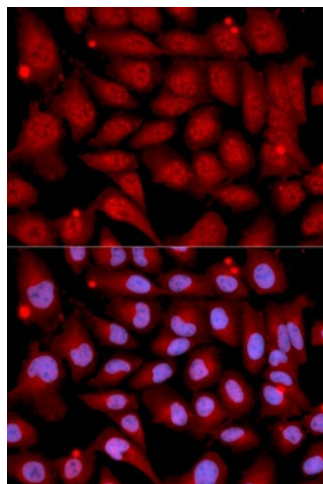
[View online »](#)

**Protein Pathways:** Amyotrophic lateral sclerosis (ALS), Fc epsilon RI signaling pathway, GnRH signaling pathway, MAPK signaling pathway, Toll-like receptor signaling pathway

**Product images:**



Western blot analysis of extracts of HeLa cell line, using MAP2K6 antibody.



Immunofluorescence analysis of U2OS cell using MAP2K6 antibody. Blue: DAPI for nuclear staining.