

## Product datasheet for **TA327382**

### Sumo 2 (SUMO2) Rabbit Polyclonal Antibody

#### Product data:

Product Type:	Primary Antibodies
Applications:	WB
Recommended Dilution:	WB 1:500 - 1:2000
Reactivity:	Human, Mouse, Rat
Host:	Rabbit
Isotype:	IgG
Clonality:	Polyclonal
Immunogen:	Recombinant protein of human SUMO2
Formulation:	Store at -20C or -80C. Avoid freeze / thaw cycles. Buffer: PBS with 0.02% sodium azide, 50% glycerol, pH7.3
Concentration:	lot specific
Purification:	Affinity purification
Conjugation:	Unconjugated
Storage:	Store at -20°C as received.
Stability:	Stable for 12 months from date of receipt.
Gene Name:	small ubiquitin-like modifier 2
Database Link:	<a href="#">NP_008868</a> <a href="#">Entrez Gene 170930 Mouse</a> <a href="#">Entrez Gene 690244 Rat</a> <a href="#">Entrez Gene 6613 Human</a> <a href="#">P61956</a>

**Background:** This gene encodes a protein that is a member of the SUMO (small ubiquitin-like modifier) protein family. It functions in a manner similar to ubiquitin in that it is bound to target proteins as part of a post-translational modification system. However, unlike ubiquitin which targets proteins for degradation, this protein is involved in a variety of cellular processes, such as nuclear transport, transcriptional regulation, apoptosis, and protein stability. It is not active until the last two amino acids of the carboxy-terminus have been cleaved off. Numerous pseudogenes have been reported for this gene. Alternate transcriptional splice variants, encoding different isoforms, have been characterized.

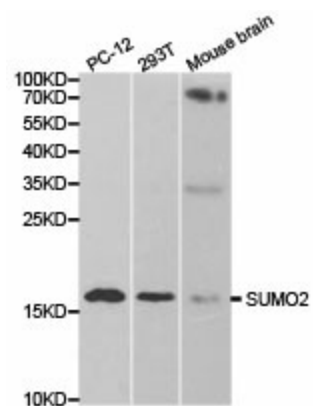
**Synonyms:** HSMT3; Smt3A; SMT3B; SMT3H2; SUMO3



[View online »](#)

Protein Families: Druggable Genome

### Product images:



Western blot analysis of extracts of various cell lines, using SUMO2 antibody.