

## Product datasheet for **TA327381**

### 14-3-3 theta (YWHAQ) Rabbit Polyclonal Antibody

#### Product data:

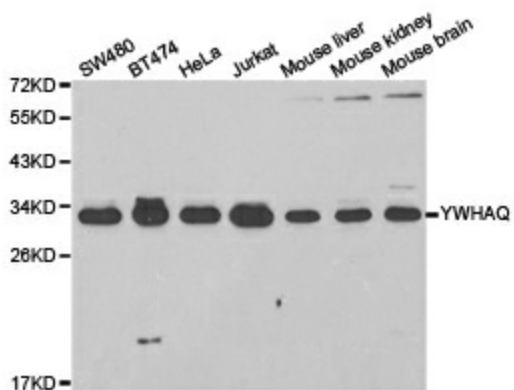
Product Type:	Primary Antibodies
Applications:	WB
Recommended Dilution:	WB 1:500 - 1:2000
Reactivity:	Human, Mouse, Rat
Host:	Rabbit
Isotype:	IgG
Clonality:	Polyclonal
Immunogen:	Recombinant protein of human YWHAQ
Formulation:	Store at -20C or -80C. Avoid freeze / thaw cycles. Buffer: PBS with 0.02% sodium azide, 50% glycerol, pH7.3
Concentration:	lot specific
Purification:	Affinity purification
Conjugation:	Unconjugated
Storage:	Store at -20°C as received.
Stability:	Stable for 12 months from date of receipt.
Gene Name:	tyrosine 3-monooxygenase/tryptophan 5-monooxygenase activation protein theta
Database Link:	<a href="#">NP_006817</a> <a href="#">Entrez Gene 22630 Mouse</a> <a href="#">Entrez Gene 25577 Rat</a> <a href="#">Entrez Gene 10971 Human</a> <a href="#">P27348</a>
Background:	This gene product belongs to the 14-3-3 family of proteins which mediate signal transduction by binding to phosphoserine-containing proteins. This highly conserved protein family is found in both plants and mammals, and this protein is 99% identical to the mouse and rat orthologs. This gene is upregulated in patients with amyotrophic lateral sclerosis. It contains in its 5' UTR a 6 bp tandem repeat sequence which is polymorphic, however, there is no correlation between the repeat number and the disease.
Synonyms:	1C5; 14-3-3; HS1
Protein Families:	Druggable Genome



[View online »](#)

**Protein Pathways:** Cell cycle, Neurotrophin signaling pathway, Oocyte meiosis, Pathogenic Escherichia coli infection

**Product images:**



Western blot analysis of extracts of various cell lines, using YWHAQ antibody.